



sesa  
FOOTWEAR

SPRING SUMMER  
2026

# SS26

SISTER	4
BROTHER	30
COLOR CARDS	44
CONTACTS	47

SNEAKERS ARE FOR GRANDPAS

# BROTHER

SIZE B:

39 - 40 - 41 - 42 - 43 - 44 - 45 - 46

# SISTER

SIZES:

35 - 36 - 37 - 38 - 39 - 40 - 41

SISTER



## NEW YORK

- Handsewn penny loafers
- Highshine calfskin
- Natural calf lining
- Blake stitched
- Handmade leather outsole



AVAILABLE COLOR CARD  
HIGHSHINE - SUEDE



LICORICE



BROWNIE

## NEW YORK

- 2 tones handsewn penny loafers
- Highshine calfskin
- Natural calf lining
- Blake stitched
- Handmade leather outsole



AVAILABLE COLOR CARD  
HIGHSHINE - SUEDE



LICORICE | BUTTER



OLIVE | BUTTER

## ATLANTA

- Handsewn tassels loafers
- Highshine calfskin
- Natural calf lining
- Blake stitched
- Handmade leather outsole



AVAILABLE COLOR CARD  
HIGHSHINE - SUEDE



BROWNIE



CHIANTI

## PRESCOTT

- Handsewn tassels loafers
- Highshine calfskin
- Natural calf lining
- Blake stitched
- Handmade leather outsole



AVAILABLE COLOR CARD  
HIGHSHINE - SUEDE



FONDENTE



OCEAN

## TRENTON

- Handsewn bit loafers
- Highshine calfskin
- Natural calf lining
- Blake stitched
- Handmade leather outsole



AVAILABLE COLOR CARD  
HIGHSHINE - SUEDE



LICORICE



FONDATE

## BOSTON

- Handsewn T-bar loafers
- Highshine calfskin
- Natural calf lining
- Blake stitched
- Handmade leather outsole



AVAILABLE COLOR CARD  
HIGHSHINE - SUEDE



LICORICE



BUTTER

## PHILADELPHIA

- Handsewn slipper loafers
- Highshine calfskin
- Natural calf lining
- Blake stitched
- Handmade leather outsole



AVAILABLE COLOR CARD  
HIGHSHINE - SUEDE



LICORICE



OCEAN

## CHARLOTTE

- Handsewn slingback loafers
- Highshine calfskin
- Natural calf lining
- Blake stitched
- Handmade leather outsole



AVAILABLE COLOR CARD  
HIGHSHINE - SUEDE



LICORICE



OLIVE

## ORLANDO

- Handsewn rucked loafers
- Lacquered sheepskin
- Natural calf lining
- Blake stitched
- Handmade leather outsole



AVAILABLE COLOR CARD  
LACQUERED - SUEDE



CHALK



CLAY

## MIAMI

- 2 tones handsewn penny loafers
- Highshine calfskin
- Natural calf lining
- Blake stitched
- Handmade leather outsole



AVAILABLE COLOR CARD  
HIGHSHINE - SUEDE



BUTTER | LICORICE



BUTTER | BROWNIE



BROWNIE | OLIVE



CHIANTI | OCEAN

## READING

- 2 tones handsewn banding tassels loafers
- Suede calfskin
- Natural calf lining
- Blake stitched
- Handmade leather outsole



AVAILABLE COLOR CARD  
SUEDE



BLACKHOLE



COFFEE



TOFFEE



NAVY

## TAMPA

- Handsewn 2-eye boat shoes
- Cowhide
- Natural calf lining
- Blake stitched
- Rubber outsole



AVAILABLE COLOR CARD  
COWHIDE - SUEDE



PEYOTE



MUSTARD



BEACH



CARAMEL

## SALT LAKE

- Handsewn 3-eye camp mocs
- Suede calfskin
- Natural calf lining
- Blake stitched
- Leather midsole
- Rubber tank outsole

AVAILABLE COLOR CARD  
COWHIDE - SUEDE



STORM



ALMOND

## SAN DIEGO

- Jellyfish fussbett sandals
- Cowhide
- Natural calf lining
- Handmade lightweight rubber outsole



AVAILABLE COLOR CARD  
COWHIDE - SUEDE



RANGER



WIDOW



CAPPUCINO



SHELL

## TORRANCE

- Fisherman sandals
- Cowhide
- Natural calf lining
- Handmade leather outsole



AVAILABLE COLOR CARD  
COWHIDE - SUEDE



PEYOTE



CAPPUCCINO



COCONUT



SHELL

## SEDONA

- Mary Jane shoes
- Highshine calfskin
- Natural calf lining
- Handmade leather outsole



AVAILABLE COLOR CARD

HIGHSHINE - SUEDE - PATENT



LICORICE



BROWNIE

## MESA

- T-strap shoes
- Highshine calfskin
- Natural calf lining
- Handmade leather outsole



AVAILABLE COLOR CARD

HIGHSHINE - SUEDE - PATENT



CHIANTI



OCEAN

## GISELA

- T-strap shoes
- Patent calfskin
- Natural calf lining
- Handmade leather outsole



AVAILABLE COLOR CARD

HIGHSHINE - SUEDE - PATENT



VAMPIRE



BLOOD

## OMAHA

- Flat shoes
- Stonewashed sheepskin
- Natural calf lining
- Handmade leather outsole



AVAILABLE COLOR CARD

STONEWASHED - SUEDE - VELVET



MOONLESS



OATMEL

## PASADENA

- Slip-on shoes
- Stonewashed sheepskin
- Natural calf lining
- Handmade leather outsole



AVAILABLE COLOR CARD  
STONEWASHED - SUEDE



COOKIE



BISON

## ROSEDALE

- Collapsed ballet flats
- Metallic sheepskin
- Natural calf lining
- Handmade leather outsole



AVAILABLE COLOR CARD

METALLIC - NAPPA - LACQUERED



AMBER



MARINE

## CLAREMONT

- Slingback flats
- Lacquered sheepskin
- Natural calf lining
- Handmade leather outsole



AVAILABLE COLOR CARD

METALLIC - NAPPA - LACQUERED



MOONLIGHT



HARBOR

## MONTECITO

- Mules
- Metallic sheepskin
- Natural calf lining
- Handmade leather outsole

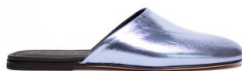


AVAILABLE COLOR CARD

METALLIC - NAPPA - LACQUERED



MOONLESS



WATER

## ROSELLE

- Laces ballet flats
- Nappa sheepskin
- Natural calf lining
- Handmade leather outsole



AVAILABLE COLOR CARD  
NAPPA



MILK



CHIPMUNK



COCOA

## ELIZABETH

- Ballet flats
- Nappa sheepskin
- Natural calf lining
- Handmade leather outsole



AVAILABLE COLOR CARD  
NAPPA



NERO



CHERRY

BROTHER



## NEW YORK

- Handsewn penny loafers
- High shine calfskin
- Natural calf lining
- Blake stitched
- Handmade leather outsole



AVAILABLE COLOR CARD  
HIGHSHINE - SUEDE



LICORICE



CHIANTI

## NEW YORK

- 2 tones handsewn penny loafers
- Highshine calfskin
- Natural calf lining
- Blake stitched
- Handmade leather outsole



AVAILABLE COLOR CARD  
HIGHSHINE - SUEDE



LICORICE | OLIVE



FONDENTE | BROWNIE

## ATLANTA

- Handsewn tassels loafers
- High shine calfskin
- Natural calf lining
- Blake stitched
- Handmade leather outsole



AVAILABLE COLOR CARD  
HIGHSHINE - SUEDE



LICORICE



OCEAN

## PRESCOTT

- Handsewn tassels loafers
- High shine calfskin
- Natural calf lining
- Blake stitched
- Handmade leather outsole



AVAILABLE COLOR CARD  
HIGHSHINE - SUEDE



LICORICE



BROWNIE

## BOSTON

- Handsewn T-bar loafers
- Highshine calfskin
- Natural calf lining
- Blake stitched
- Handmade leather outsole



AVAILABLE COLOR CARD  
HIGHSHINE - SUEDE



LICORICE



BUTTER

## ORLANDO

- Handsewn ruched loafers
- Lacquered sheepskin
- Natural calf lining
- Blake stitched
- Handmade leather outsole



AVAILABLE COLOR CARD  
LACQUERED - SUEDE



CAVIAR



HARBOR

## MIAMI

- 2 tones handsewn penny loafers
- Highshine calfskin
- Natural calf lining
- Blake stitched
- Handmade leather outsole



AVAILABLE COLOR CARD  
HIGHSHINE - SUEDE



BUTTER | OCEAN



OLIVE | OCEAN

## TAMPA

- Handsewn 2-eye boat shoes
- Cowhide
- Natural calf lining
- Blake stitched
- Rubber outsole



AVAILABLE COLOR CARD  
COWHIDE - SUEDE



CAPPUCCINO



COCONUT



OTTER



CHOCOLAT

## SALT LAKE

- Handsewn 3-eye camp mocs
- Cow hide
- Natural calf lining
- Blake stitched
- Leather midsole
- Rubber tank outsole

AVAILABLE COLOR CARD  
COWHIDE - SUEDE



COCONUT



EXPLORER

## CODY

- Handsewn camp shoes
- Suede calfskin
- Natural calf lining
- Blake stitched
- Leather midsole
- Rubber tank outsole

AVAILABLE COLOR CARD  
COWHIDE - SUEDE



HUNTER



CARAMEL

## SAN DIEGO

- Jellyfish fussbett sandals
- Cowhide
- Natural calf lining
- Handmade lightweight rubber outsole



AVAILABLE COLOR CARD  
COWHIDE - SUEDE



COCONUT



PEYOTE

## OMAHA

- Flat shoes
- Velvet goatskin
- Natural calf lining
- Handmade leather outsole



AVAILABLE COLOR CARD

STONEWASHED - SUEDE - VELVET



WETSAND



HENNA

## PASADENA

- Slip-on shoes
- Stonewashed sheepskin
- Natural calf lining
- Handmade leather outsole



AVAILABLE COLOR CARD  
STONWASHED - SUEDE

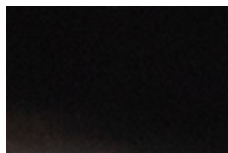


MOONLESS

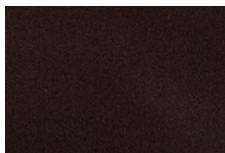


BEAVER

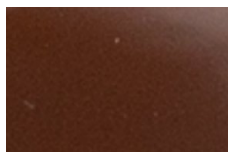
## HIGH SHINE



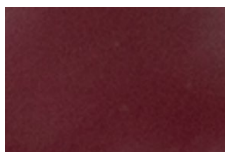
LICORICE



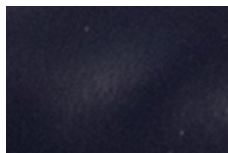
FONDENTE



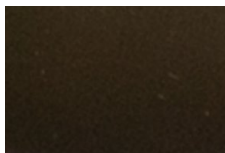
BROWNIE



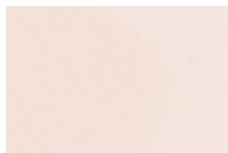
CHIANTI



OCEAN

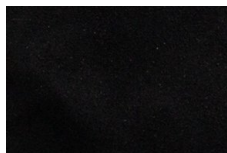


OLIVE

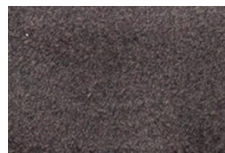


BUTTER

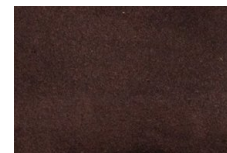
## SUEDE



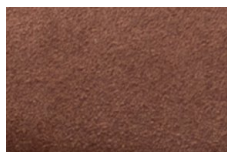
BLACKHOLE



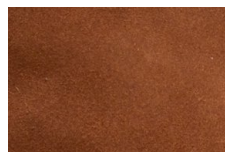
STORM



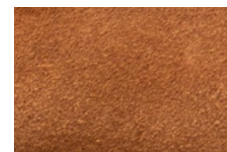
COFFEE



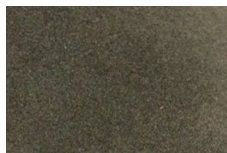
CHOCOLAT



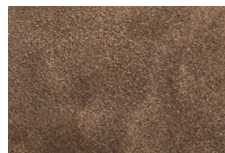
TOFFEE



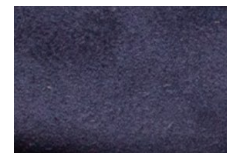
CARAMEL



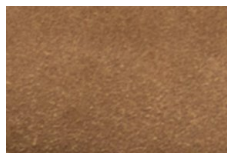
HUNTER



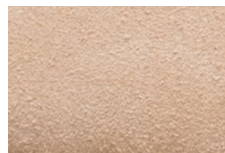
EXPLORER



NAVY

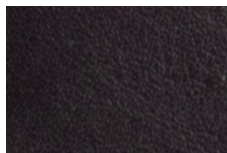


OTTER

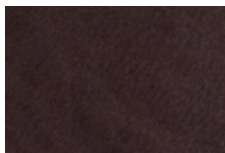


BEACH

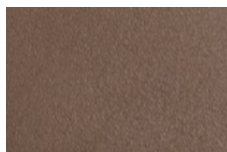
## COWHIDE



WIDOW



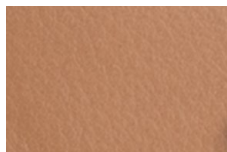
COCONUT



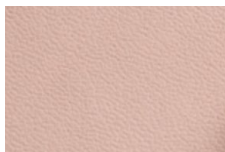
RANGER



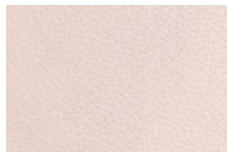
MUSTARD



CAPPUCCINO



PEYOTE



SHELL

## LACQUERED



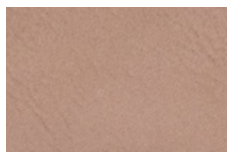
CAVIAR



HARBOR



CHALK



CLAY

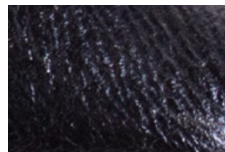


MOONLIGHT

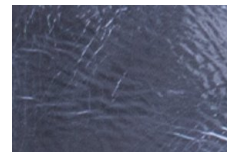
## METALLIC



AMBER

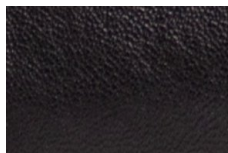


MARINE

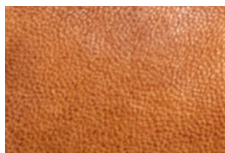


WATER

## STONEWASHED



MOONLESS



COOKIE

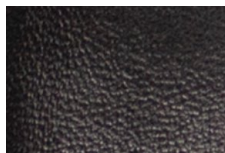


BISON

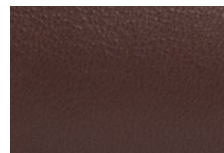


BEAVER

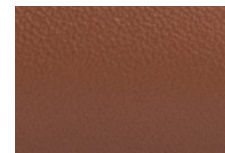
## NAPPA



NERO



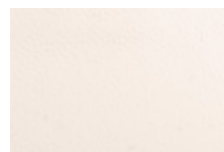
COCOA



CHIPMUNK



CHERRY



MILK

## GLOSSY

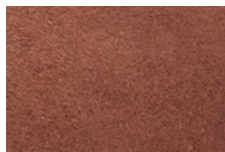


VAMPIRE

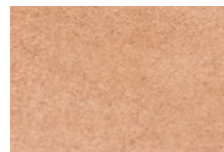


BLOOD

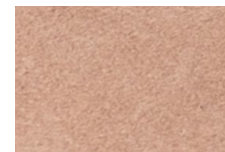
## VELVET



HENNA



WETSAND



OATMEAL

HEADQUARTER

---

**SESA SHOES SRL**

Via Portogallo 4  
63813 Monte Urano (FM)  
ITALIA

**Marco Peticari**

[marco@sesashoes.com](mailto:marco@sesashoes.com)



sesa  
sesafootwear.com