



sesa  
FOOTWEAR  
AW26

# AW26

SISTER	4
BROTHER	32
COLOR CARDS	48
CONTACTS	51

SNEAKERS ARE FOR GRANDPAS

# BROTHER

SIZE B:

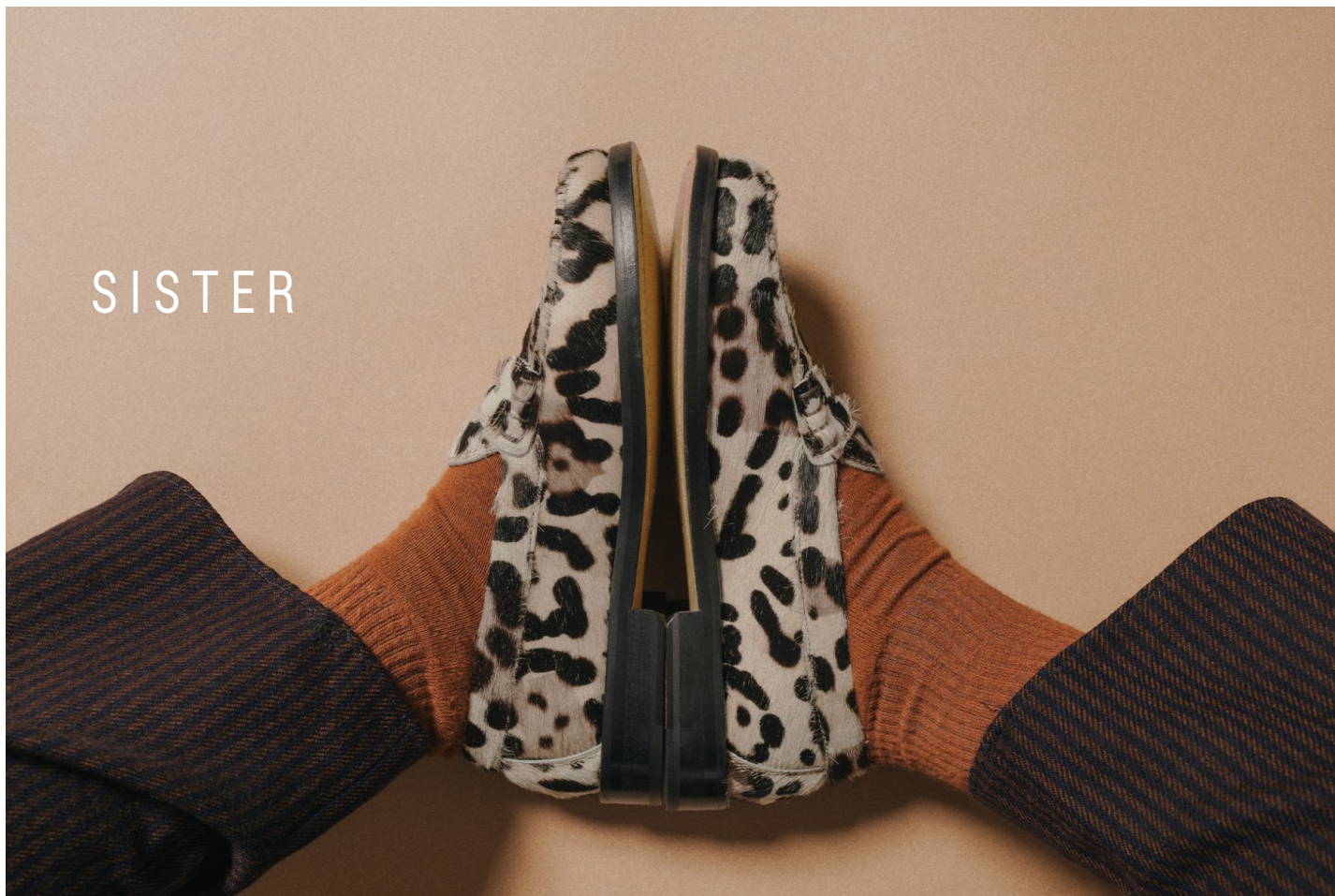
39 - 40 - 41 - 42 - 43 - 44 - 45 - 46

# SISTER

SIZES:

35 - 36 - 37 - 38 - 39 - 40 - 41

SISTER



## NEW YORK

- Handsewn penny loafers
- Highshine calfskin
- Natural calf lining
- Blake stitched
- Handmade leather outsole



AVAILABLE COLOR CARD  
HIGHSHINE - SUEDE



LICORICE



BROWNIE

## NEW YORK

- 2 tones handsewn penny loafers
- Highshine calfskin
- Natural calf lining
- Blake stitched
- Handmade leather outsole



AVAILABLE COLOR CARD  
HIGHSHINE - SUEDE



LICORICE | BUTTER



OLIVE | BUTTER



OLIVE | BROWNIE

## NEW YORK

- Handsewn penny loafers
- Hairy calfskin
- Natural calf lining
- Blake stitched
- Handmade leather outsole



AVAILABLE COLOR CARD  
HAIRY



SPECK



PEGGY



WILD



BROWNCOW

## BOSTON

- Handsewn T-bar loafers
- Highshine calfskin
- Natural calf lining
- Blake stitched
- Handmade leather outsole



AVAILABLE COLOR CARD

HIGHSHINE - SUEDE-HAIRY



LICORICE



ANTRHAX



BUTTER

## PRESCOTT

- Handsewn tassels loafers
- Highshine calfskin
- Natural calf lining
- Blake stitched
- Handmade leather outsole



AVAILABLE COLOR CARD  
HIGHSHINE - SUEDE



FONDENTE



OCEAN

## ATLANTA

- Handsewn tassels loafers
- Highshine calfskin
- Natural calf lining
- Blake stitched
- Handmade leather outsole



AVAILABLE COLOR CARD  
HIGHSHINE - SUEDE



BROWNIE



CHIANTI

## TRENTON

- Handsewn bit loafers
- Highshine calfskin
- Natural calf lining
- Blake stitched
- Handmade leather outsole



AVAILABLE COLOR CARD  
HIGHSHINE - SUEDE



LICORICE



FONDATE

## PHILADELPHIA

- Handsewn slipper loafers
- Highshine calfskin
- Natural calf lining
- Blake stitched
- Handmade leather outsole



AVAILABLE COLOR CARD

HIGHSHINE - SUEDE-HAIRY



LICORICE



OCEAN

## MIAMI

- 2 tones handsewn penny loafers
- Highshine calfskin
- Natural calf lining
- Blake stitched
- Handmade leather outsole



AVAILABLE COLOR CARD  
HIGHSHINE - SUEDE



CRIMSON | CHIANTI



GIANDUIA | FONDENTE



BROWNIE | OLIVE



CHIANTI | OCEAN

## READING

- 2 tones handsewn banding tassels loafers
- Suede calfskin
- Natural calf lining
- Blake stitched
- Handmade leather outsole



AVAILABLE COLOR CARD  
SUEDE



BLACKHOLE



CRIMSON



TOFFEE



CANDLE

## OAKLAND

- Handsewn 2-eye camp moc
- Suede
- Natural calf lining
- Blake stitched
- Leather midsole
- Vibram lightweight outsole



AVAILABLE COLOR CARD  
SUEDE - VINTAGE



VIOLET



TOFFEE



CRIMSON



ASHES

## QUEENS

- Handsewn penny loafers
- Hairy calfskin
- Natural calf lining
- Blake stitched
- Leather midsole
- Vibram lightweight outsole

AVAILABLE COLOR CARD

HAIRY - HIGHSHINE - SUEDE



NORI



CREAM

## TYLER

- Handsewn tassels loafers
- Hairy calfskin
- Natural calf lining
- Blake stitched
- Leather midsole
- Vibram lightweight outsole

AVAILABLE COLOR CARD

HAIRY - HIGHSHINE - SUEDE



NUTELLA



RIFLE

## PEORIA

- Handsewn slipon loafers
- Hairy calfskin
- Natural calf lining
- Blake stitched
- Leather midsole
- Vibram lightweight outsole

AVAILABLE COLOR CARD

HAIRY - HIGHSHINE - SUEDE



CARDINAL



OILERS

## SAVANNAH

- Ballet flats
- Glossy calfskin
- Natural calf lining
- Handmade leather outsole



AVAILABLE COLOR CARD  
HAIRY - GLOSSY



SMERALDO



SCARLET



LEOPARD



PEGGY

## AURORA

- 35 mm heel pumps
- Glossy calfskin
- Natural calf lining
- Handmade leather outsole



AVAILABLE COLOR CARD  
FULLGRAIN - GLOSSY



GLOOMY



MILK

## RAMONA

- Flat bootie
- Hairy calfskin
- Natural calf lining
- Handmade leather outsole



AVAILABLE COLOR CARD  
HAIRY - GLOSSY



NORI



MILK

## BALTIMORE

- Bluchers
- Highshine calfskin
- Natural calf lining
- Handmade lightweight outsole
- Anti-slipping rubber



AVAILABLE COLOR CARD

HIGHSHINE - SUEDE - HAIRY - VINTAGE



LICORICE



CANDLE

## WESTON

- Wingtip oxfords
- Vintage calfskin
- Natural calf lining
- Handmade lightweight outsole
- Anti-slipping rubber



AVAILABLE COLOR CARD

HIGHSHINE - SUEDE - VINTAGE



LICORICE



BLEACH

## CHICAGO

- Moc-toe derbies
- Highshine calfskin
- Natural calf lining
- Handmade lightweight outsole
- Anti-slipping rubber



AVAILABLE COLOR CARD

HIGH SHINE - SUEDE - HAIRY - VINTAGE



FONDATE



LEOPARD

## DAYTON

- Chelsea boots
- Vintage calfskin
- Natural calf lining
- Handmade lightweight outsole
- Anti-slipping rubber



AVAILABLE COLOR CARD

HIGHSHINE - SUEDE-VINTAGE



WIDOW



COCONUT

## DETROIT

- Plain toe boots
- Vintage calfskin
- Natural calf lining
- Handmade lightweight outsole
- Anti-slipping rubber



AVAILABLE COLOR CARD

HIGHSHINE - SUEDE - HAIRY - VINTAGE



WIDOW



LEOPARD

## SEDONA

- Mary Jane shoes
- Highshine calfskin
- Natural calf lining
- Handmade leather outsole



AVAILABLE COLOR CARD

HIGHSHINE - SUEDE - GLOSSY



LICORICE



BROWNIE

## WELLINGTON

- Knee-high boots
- Vintage calfskin
- Natural calf lining
- Handmade leather outsole
- Anti-slipping rubber

AVAILABLE COLOR CARD

VINTAGE - FULLGRAIN - SUEDE



GLOOMY



BLEACH



CACAO



MOUSE

## LEXINGTON

- Mid-high boots
- Cow hide
- Natural calf lining
- Handmade leather outsole
- Anti-slipping rubber

AVAILABLE COLOR CARD

VINTAGE - SUEDE - FULLGRAIN



BLEACH



CANDLE

## ABERDEEN

- Tourister shoes
- Suede Calfskin
- Natural calf lining
- Lightweight outsole
- Anti-slipping Vibram Arctic Grip rubber



AVAILABLE COLOR CARD  
HAIRY - SUEDE



BLACKHOLE



STORM



GIANDUIA



CRIMSON

## SEATTLE

- Outdoor boots
- Suede Calfskin
- Natural calf lining
- Lightweight outsole
- Anti-slipping Vibram Arctic Grip rubber



AVAILABLE COLOR CARD  
HAIRY - SUEDE



BLACKHOLE



EXPLORER



VIOLET



LEOPARD



MUSTANG

BROTHER



## NEW YORK

- Handsewn penny loafers
- Highshine calfskin
- Natural calf lining
- Blake stitched
- Handmade leather outsole



AVAILABLE COLOR CARD  
HIGHSHINE - SUEDE



LICORICE



CHIANTI



FONDATE

## NEW YORK

- 2 tones handsewn penny loafers
- Highshine calfskin
- Natural calf lining
- Blake stitched
- Handmade leather outsole



AVAILABLE COLOR CARD  
HIGHSHINE - SUEDE



LICORICE | OLIVE



FONDENTE | BROWNIE



LICORICE | BUTTER

## ATLANTA

- Handsewn tassels loafers
- Highshine calfskin
- Natural calf lining
- Blake stitched
- Handmade leather outsole



AVAILABLE COLOR CARD  
HIGHSHINE - SUEDE



LICORICE



OCEAN

## PRESCOTT

- Handsewn tassels loafers
- Highshine calfskin
- Natural calf lining
- Blake stitched
- Handmade leather outsole



AVAILABLE COLOR CARD  
HIGHSHINE - SUEDE



LICORICE



BROWNIE

## MIAMI

- 2 tones handsewn penny loafers
- Suede calfskin
- Natural calf lining
- Blake stitched
- Handmade leather outsole



AVAILABLE COLOR CARD  
HIGHSHINE - SUEDE



STORM | ANTHRAX



CHIANTI | LICORICE



OLIVE | OCEAN

## READING

- 2 tones handsewn banding tassels loafers
- Suede calfskin
- Natural calf lining
- Blake stitched
- Handmade leather outsole



AVAILABLE COLOR CARD  
SUEDE



NAVY



GIANDUIA



EXPLORER

## OAKLAND

- Handsewn 2-eye camp moc
- Vintage calfskin
- Natural calf lining
- Blake stitched
- Leather midsole
- Vibram lightweight outsole

AVAILABLE COLOR CARD  
VINTAGE - SUEDE



WIDOW



COCONUT

## RENO

- Handsewn penny loafers
- Vintage calfskin
- Natural calf lining
- Blake stitched
- Leather midsole
- Vibram lightweight outsole

AVAILABLE COLOR CARD

VINTAGE - HIGHSHINE - SUEDE



WIDOW



COCONUT

## BOZEMAN

- Handsewn penny loafers
- Vintage calfskin
- Natural calf lining
- Blake stitched
- Leather midsole
- Vibram lightweight outsole

AVAILABLE COLOR CARD

VINTAGE - HIGHSHINE - SUEDE



WIDOW



COCONUT

## AMARILLO

- Handsewn ruched loafers
- Suede calfskin
- Natural calf lining
- Blake stitched
- Leather midsole
- Vibram lightweight outsole

AVAILABLE COLOR CARD  
VINTAGE - SUEDE



STORM



TOFFEE

## BALTIMORE

- Bluchers
- Highshine calfskin
- Natural calf lining
- Handmade lightweight outsole
- Anti-slipping rubber



AVAILABLE COLOR CARD

HIGHSHINE - VINTAGE - SUEDE



LICORICE



COFFEE

## CHICAGO

- Moc-toe derbies
- Vintage calfskin
- Natural calf lining
- Handmade lightweight outsole
- Anti-slipping rubber



AVAILABLE COLOR CARD

HIGHSHINE - VINTAGE - SUEDE



COCONUT



BLACKHOLE



ASHES

## DETROIT

- Plain toe boots
- Vintage calfskin
- Natural calf lining
- Handmade lightweight outsole
- Anti-slipping rubber



AVAILABLE COLOR CARD

HIGHSHINE - VINTAGE - SUEDE



BLEAECHE



COFFEE

## ABERDEEN

- Tourister shoes
- Suede Calfskin
- Natural calf lining
- Lightweight outsole
- Anti-slipping Vibram Arctic Grip rubber



AVAILABLE COLOR CARD  
HAIRY - SUEDE



BLACKHOLE



STORM



GIANDUIA



CRIMSON

## SEATTLE

- Outdoor boots
- Suede Calfskin
- Natural calf lining
- Lightweight outsole
- Anti-slipping Vibram Arctic Grip rubber



AVAILABLE COLOR CARD  
HAIRY - SUEDE



BLACKHOLE



EXPLORER

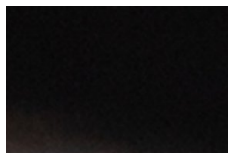


ASHES

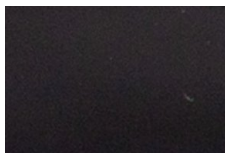


TOFFEE

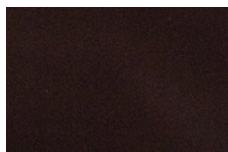
## HIGHSHINE



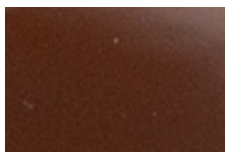
LICORICE



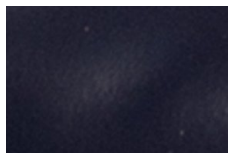
ANTHRAX



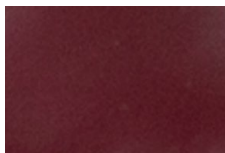
FONDENTE



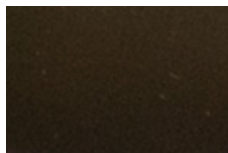
BROWNIE



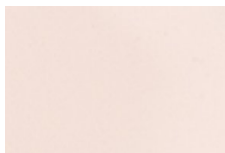
OCEAN



CHIANTI

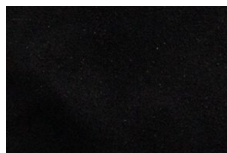


OLIVE

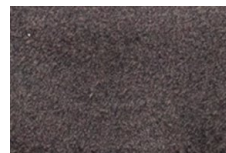


BUTTER

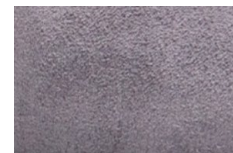
## SUEDE



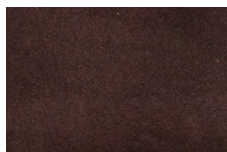
BLACKHOLE



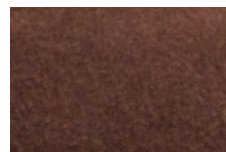
STORM



ASHES



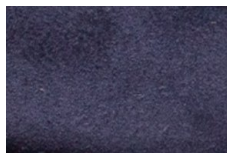
COFFEE



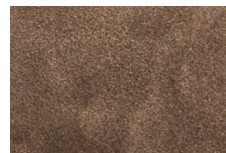
GIANDUIA



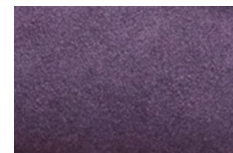
TOFFEE



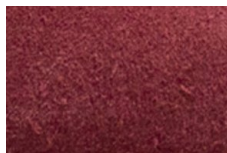
NAVY



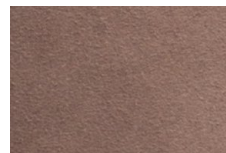
EXPLORER



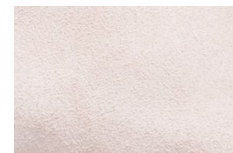
VIOLET



CRIMSON

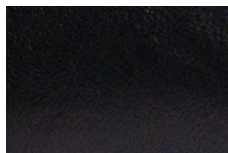


MOUSE

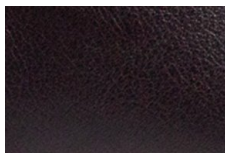


CANDLE

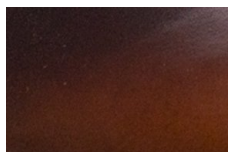
## VINTAGE



WIDOW

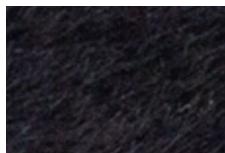


COCONUT

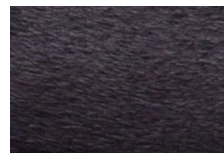


BLEACH

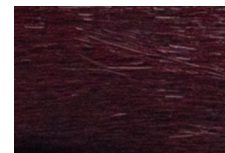
## HAIRY



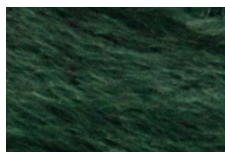
NORI



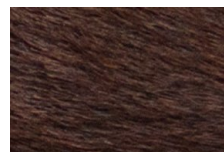
RIFLE



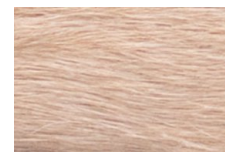
CARDINAL



OILERS



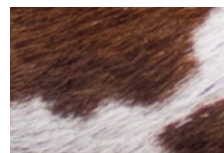
NUTELLA



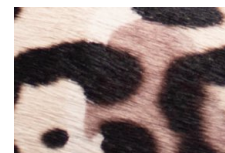
CREAM



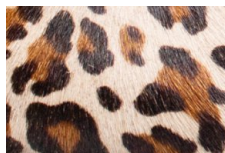
MUSTANG



BROWN COW



WILD



LEOPARD



PEGGY

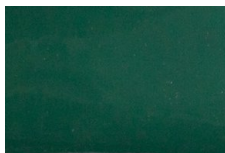


SPECK

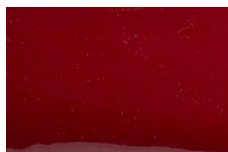
## GLOSSY



VAMPIRE



SMERALDO

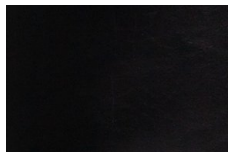


SCARLET

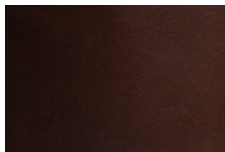


MILK

## FULLGRAIN



GLOOMY



CACAO

HEADQUARTER

---

**SESA SHOES SRL**

Via Portogallo 4  
63813 Monte Urano (FM)  
ITALIA

**Marco Peticari**

[marco@sesashoes.com](mailto:marco@sesashoes.com)

sesa  
[sesafootwear.com](http://sesafootwear.com)