



sesa
FOOTWEAR

AUTUMN WINTER
2025

AW 25

SISTER	4
BROTHER	29
COLOR CARDS	43
CONTACTS	45

SNEAKERS ARE FOR GRANDPAS

BROTHER

SIZE B:

39 - 40 - 41 - 42 - 43 - 44 - 45 - 46

SISTER

SIZES:

35 - 36 - 37 - 38 - 39 - 40 - 41

SISTER



NEW YORK

- Handsewn penny loafers
- High shine calfskin
- Natural calf lining
- Blake stitched
- Handmade leather outsole



AVAILABLE COLOR CARD
HIGH SHINE - SUEDE



LICORICE



BROWNIE

NEW YORK

- 2 tones handsewn penny loafers
- High shine calfskin
- Natural calf lining
- Blake stitched
- Handmade leather outsole



AVAILABLE COLOR CARD
HIGH SHINE - SUEDE



LICORICE | BUTTER



OLIVE | BUTTER

NEW YORK

- Handsewn penny loafers
- Hairy calfskin
- Natural calf lining
- Blake stitched
- Handmade leather outsole



AVAILABLE COLOR CARD
HAIRY



BROWN COW



MUSTANG



LUM



WILD

ATLANTA

- Handsewn tassels loafers
- High shine calfskin
- Natural calf lining
- Blake stitched
- Handmade leather outsole



AVAILABLE COLOR CARD
HIGH SHINE - SUEDE



BROWNIE



CHIANTI

PRESCOTT

- Handsewn tassels loafers
- High shine calfskin
- Natural calf lining
- Blake stitched
- Handmade leather outsole



AVAILABLE COLOR CARD

HIGH SHINE - SUEDE



FONDENTE



OCEAN

TRENTON

- Handsewn bit loafers
- High shine calfskin
- Natural calf lining
- Blake stitched
- Handmade leather outsole



AVAILABLE COLOR CARD
HIGH SHINE - SUEDE



LICORICE



FONDATE

BOSTON

- Handsewn T-bar loafers
- High shine calfskin
- Natural calf lining
- Blake stitched
- Handmade leather outsole



AVAILABLE COLOR CARD
HIGH SHINE - SUEDE



LICORICE



BUTTER

PHILADELPHIA

- Handsewn slipper loafers
- High shine calfskin
- Natural calf lining
- Blake stitched
- Handmade leather outsole



AVAILABLE COLOR CARD
HIGH SHINE - SUEDE



LICORICE



OCEAN

MIAMI

- 2 tones handsewn penny loafers
- High shine calfskin
- Natural calf lining
- Blake stitched
- Handmade leather outsole



AVAILABLE COLOR CARD
HIGH SHINE - SUEDE



LICORICE | BUTTER



BUTTER | LICORICE



BUTTER | BROWNIE



BROWNIE | OLIVE



CHIANTI | OCEAN

READING

- 2 tones handsewn banding tassels loafers
- Suede calfskin
- Natural calf lining
- Blake stitched
- Handmade leather outsole



AVAILABLE COLOR CARD
SUEDE



BLACKHOLE



COFFEE



TOFFEE



NAVY

QUEENS

- Handsewn penny loafers
- Hairy calfskin
- Natural calf lining
- Blake stitched
- Leather midsole
- Vibram lightweight outsole

AVAILABLE COLOR CARD

HAIRY - HIGH SHINE - SUEDE



NORI



HAZELNUT

PROVIDENCE

- Handsewn t-bar loafers
- Hairy calfskin
- Natural calf lining
- Blake stitched
- Leather midsole
- Vibram lightweight outsole

AVAILABLE COLOR CARD

HAIRY - HIGH SHINE - SUEDE



IVY



CREAM

TYLER

- Handsewn tassels loafers
- Hairy calfskin
- Natural calf lining
- Blake stitched
- Leather midsole
- Vibram lightweight outsole

AVAILABLE COLOR CARD

HAIRY - HIGH SHINE - SUEDE



NUTELLA



ROYAL

SAVANNAH

- Ballet flats
- Hairy calfskin
- Natural calf lining
- Handmade rubber outsole



AVAILABLE COLOR CARD
HAIRY



MUSTANG



WILD



LEOPARD

BALTIMORE

- Bluchers
- High shine calfskin
- Natural calf lining
- Handmade lightweight outsole
- Anti-slipping rubber



AVAILABLE COLOR CARD

HIGH SHINE - SUEDE - HAIRY



LICORICE



ALMOND

WESTON

- Wingtip oxfords
- High shine calfskin
- Natural calf lining
- Handmade lightweight outsole
- Anti-slipping rubber



AVAILABLE COLOR CARD

HIGH SHINE - SUEDE



LICORICE



STORM

CHICAGO

- Moc-toe derbies
- High shine calfskin
- Natural calf lining
- Handmade lightweight outsole
- Anti-slipping rubber



AVAILABLE COLOR CARD

HIGH SHINE - SUEDE - HAIRY



FONDATE



LEOPARD

DAYTON

- Chelsea boots
- High shine calfskin
- Natural calf lining
- Handmade lightweight outsole
- Anti-slipping rubber

AVAILABLE COLOR CARD

HIGH SHINE - SUEDE



BROWNIE



COFFEE

DETROIT

- Plain toe boots
- High shine calfskin
- Natural calf lining
- Handmade lightweight outsole
- Anti-slipping rubber

AVAILABLE COLOR CARD

HIGH SHINE - SUEDE - HAIRY



LICORICE



LEOPARD

WELLINGTON

- Knee-high boots
- Suede calfskin
- Natural calf lining
- Handmade leather outsole
- Anti-slipping rubber



AVAILABLE COLOR CARD
COW HIDE - SUEDE



WIDOW



COCONUT



WALNUT



COFFEE



TOFFEE

LEXINGTON

- Mid-high boots
- Cow hide
- Natural calf lining
- Handmade leather outsole
- Anti-slipping rubber

AVAILABLE COLOR CARD
COW HIDE - SUEDE



WIDOW



COCONUT

SALT LAKE

- Handsewn 3-eye camp mocs
- Suede calfskin
- Natural calf lining
- Blake stitched
- Leather midsole
- Rubber tank outsole

AVAILABLE COLOR CARD
COW HIDE - SUEDE



STORM



ALMOND

MILWAUKEE

- Mountaineering boots
- Cow hide
- Natural calf lining
- Blake stitched
- Leather midsole
- Rubber tank outsole

AVAILABLE COLOR CARD
COW HIDE - SUEDE



WIDOW



RAISIN

SEATTLE

- Outdoor boots
- Suede Calfskin
- Natural calf lining
- Lightweight outsole
- Anti-slipping Vibram Arctic Grip rubber



AVAILABLE COLOR CARD
HAIRY - SUEDE



BLACKHOLE



EXPLORER



MUSTANG



LEOPARD

BROTHER



NEW YORK

- Handsewn penny loafers
- High shine calfskin
- Natural calf lining
- Blake stitched
- Handmade leather outsole



AVAILABLE COLOR CARD
HIGH SHINE - SUEDE



LICORICE



CHIANTI

ATLANTA

- Handsewn tassels loafers
- High shine calfskin
- Natural calf lining
- Blake stitched
- Handmade leather outsole



AVAILABLE COLOR CARD

HIGH SHINE - SUEDE



LICORICE



OCEAN

PRESCOTT

- Handsewn tassels loafers
- High shine calfskin
- Natural calf lining
- Blake stitched
- Handmade leather outsole



AVAILABLE COLOR CARD
HIGH SHINE - SUEDE



LICORICE



BROWNIE

RENO

- Handsewn penny loafers
- Cow hide
- Natural calf lining
- Blake stitched
- Leather midsole
- Vibram lightweight outsole

AVAILABLE COLOR CARD

COW HIDE - HIGH SHINE - SUEDE



WIDOW



COCONUT

BALTIMORE

- Bluchers
- High shine calfskin
- Natural calf lining
- Handmade lightweight outsole
- Anti-slipping rubber



AVAILABLE COLOR CARD

HIGH SHINE - RICE GRAIN - SUEDE



LICORICE



COFFEE

CLEVELAND

- Wingtip oxfords
- High shine calfskin
- Natural calf lining
- Handmade lightweight outsole
- Anti-slipping rubber



AVAILABLE COLOR CARD

HIGH SHINE - RICE GRAIN - SUEDE



FONDETE



TOFFEE

CHICAGO

- Moc-toe derbies
- Rice grain calfskin
- Natural calf lining
- Handmade lightweight outsole
- Anti-slipping rubber



AVAILABLE COLOR CARD

HIGH SHINE - RICE GRAIN - SUEDE



BLACK RICE



BLACKHOLE

DETROIT

- Plain toe boots
- Rice grain calfskin
- Natural calf lining
- Handmade lightweight outsole
- Anti-slipping rubber



AVAILABLE COLOR CARD

HIGH SHINE - RICE GRAIN - SUEDE



BROWN RICE



COFFEE

SALT LAKE

- Handsewn 3-eye camp mocs
- Cow hide
- Natural calf lining
- Blake stitched
- Leather midsole
- Rubber tank outsole

AVAILABLE COLOR CARD
COW HIDE - SUEDE



COCONUT



EXPLORER

CODY

- Handsewn camp shoes
- Suede calfskin
- Natural calf lining
- Blake stitched
- Leather midsole
- Rubber tank outsole

AVAILABLE COLOR CARD
COW HIDE - SUEDE



HUNTER



CIGAR

PRESTON

- Handsewn camp boots
- Suede calfskin
- Natural calf lining
- Blake stitched
- Leather midsole
- Rubber tank outsole

AVAILABLE COLOR CARD
COW HIDE - SUEDE



BLACKHOLE



TOFFEE

MILWAUKEE

- Mountaineering boots
- Cow hide
- Natural calf lining
- Blake stitched
- Leather midsole
- Rubber tank outsole

AVAILABLE COLOR CARD
COW HIDE - SUEDE



COCONUT



PEANUT

SEATTLE

- Outdoor boots
- Suede Calfskin
- Natural calf lining
- Lightweight outsole
- Anti-slipping Vibram Arctic Grip rubber



AVAILABLE COLOR CARD
HAIRY - SUEDE



BLACKHOLE



EXPLORER

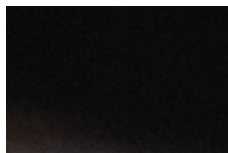


TOFFEE

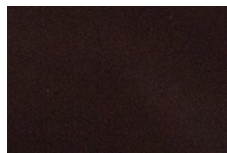


GEYSER

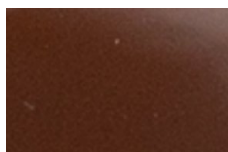
HIGH SHINE



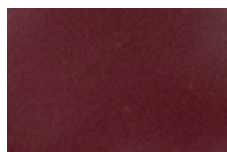
LICORICE



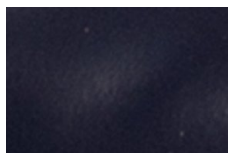
FONDENTE



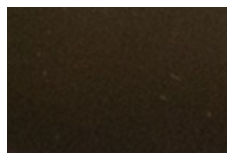
BROWNIE



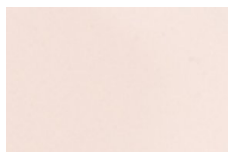
CHIANTI



OCEAN

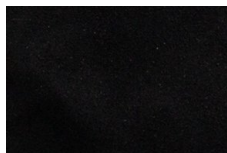


OLIVE

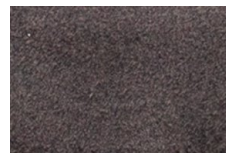


BUTTER

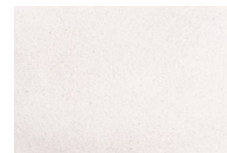
SUEDE



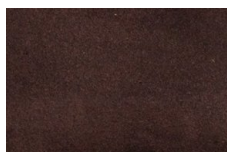
BLACKHOLE



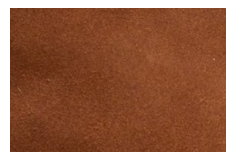
STORM



GEYSER



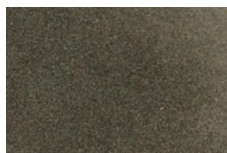
COFFEE



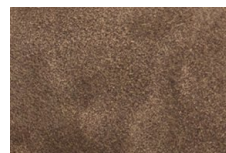
TOFFEE



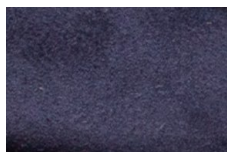
CIGAR



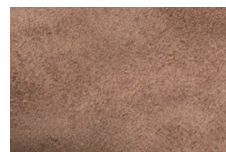
HUNTER



EXPLORER

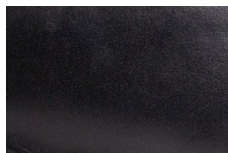


NAVY



ALMOND

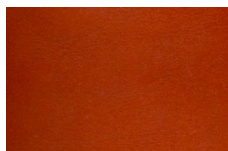
COW HIDE



WIDOW



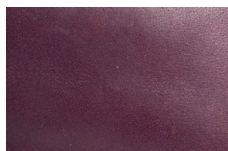
COCONUT



WALNUT

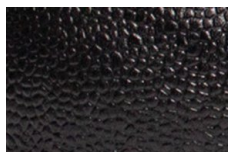


PEANUT



RAISIN

RICE GRAIN

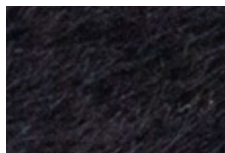


BLACK RICE

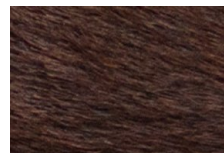


BROWN RICE

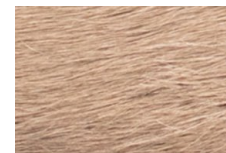
HAIRY



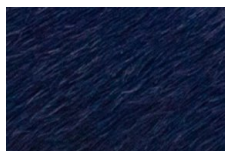
NORI



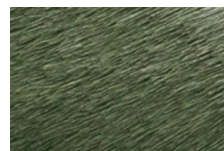
NUTELLA



HAZELNUT



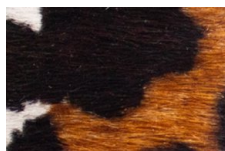
ROYAL



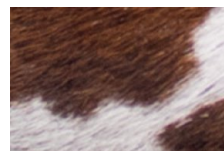
IVY



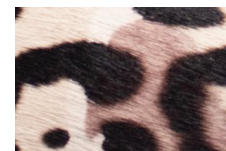
CREAM



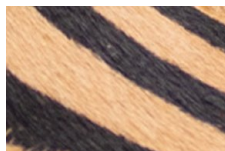
MUSTANG



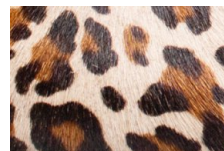
BROWN COW



WILD



LUM



LEOPARD

HEADQUARTER

SESA SHOES SRL

Via Portogallo 4
63813 Monte Urano (FM)
ITALIA

Marco Peticari

marco@sesashoes.com

FRANCE

SHOWROOM AUGUST

26, Rue Neuve Sainte Catherine
13007 Marseille

Enzo Klein

+33 (0)6 10 05 76 13
enzo@showroomaugust.fr

USA - JAPAN

KNOW Showroom

24445 Park Street #D
Torrance, CA 90505

Satoru Nakayama

hello@ontheparkstreet.com

LAZIO : CENTRO SUD

GOOD TIMES SHOWROOM

Via Cantalupo in Sabina 33D
00191 Roma

Roberto Moretti

+39 338 524 6566

Karen Smith

+39 347 211 7516

PIEMONTE : LIGURIA

STUDIO VM

Via Angelo Brofferio 1
10121 Torino

Riccardo Vairo

+39 335 705 8523

EMILIA ROMAGNA

SAVANI STUDIO

Via dei Notai, 139
40050 Funo d'Argelato (BO)

Riccardo Savani

+39 328 583 6870

Valentina Gagliano

+39 375 584 6289

TRIVENETO

SANI DIFFUSIONE

Via Carlo Cattaneo, 19
36100 Vicenza

Gimmi Sani

+39 348 739 9473

sanidiffusione@gmail.com



sesa
sesafootwear.com