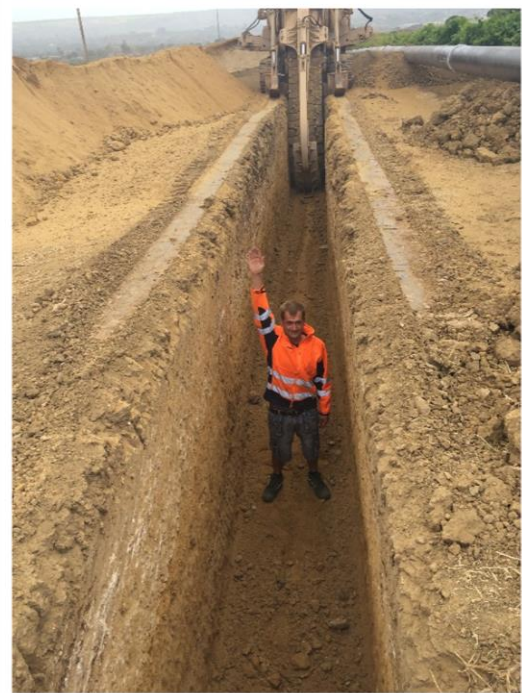
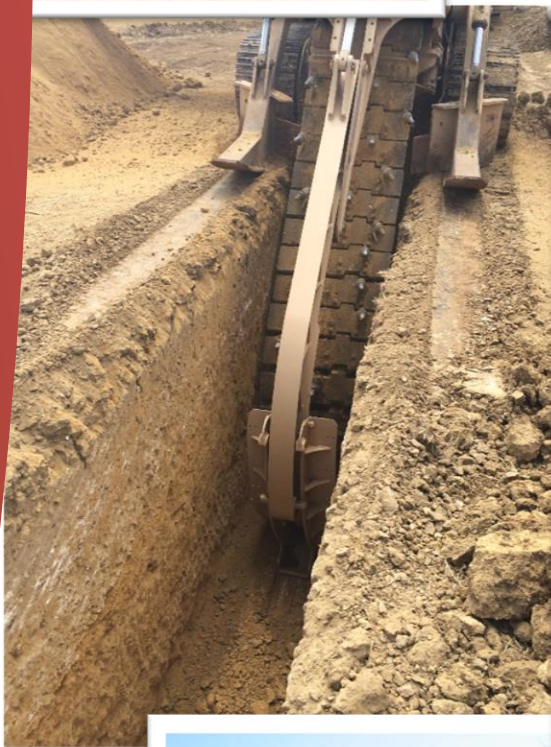


SERREMAR Italia S.r.l.



**SPECIAL EXCAVATION
COMPULSORY SECTION
EN**

SPECIAL EXCAVATIONS COMPULSORY SECTION

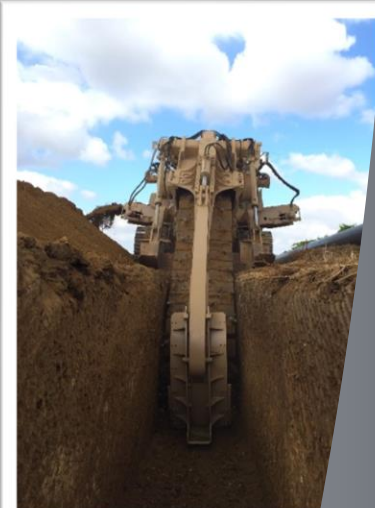


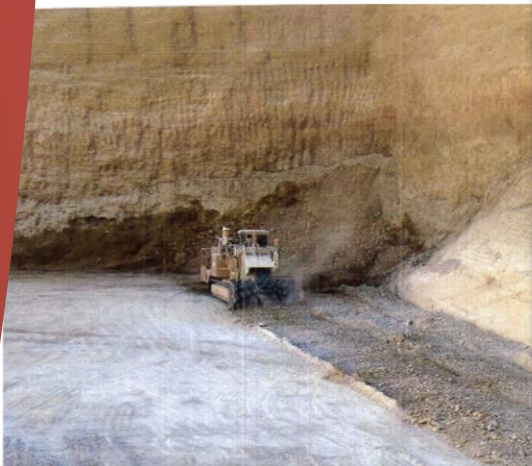


SERREMAR ITALIA can boast a solid reputation in the realization of **special excavations with compulsory section**.

With the experience acquired, the team of specialized workers and the large fleet of vehicles supplied, the company can be considered an important point of reference in the sector. The technical-organizational and economic-financial requirements possessed, as well as the vast experience acquired in every part of the world, place SERREMAR ITALIA among the few Italian manufacturers qualified to compete in larger contracts, in Italy and abroad.

Thanks to the integration of advanced technologies and the synergy with specialized partners in the sector, SERREMAR ITALIA offers innovative solutions to meet every market need; last but not least the on-site production capacity of HDPE - PP pipes directly on site, providing an ideal service to support large infrastructures, such as gas pipelines, aqueducts, large irrigation systems, telecommunications and other large special works.



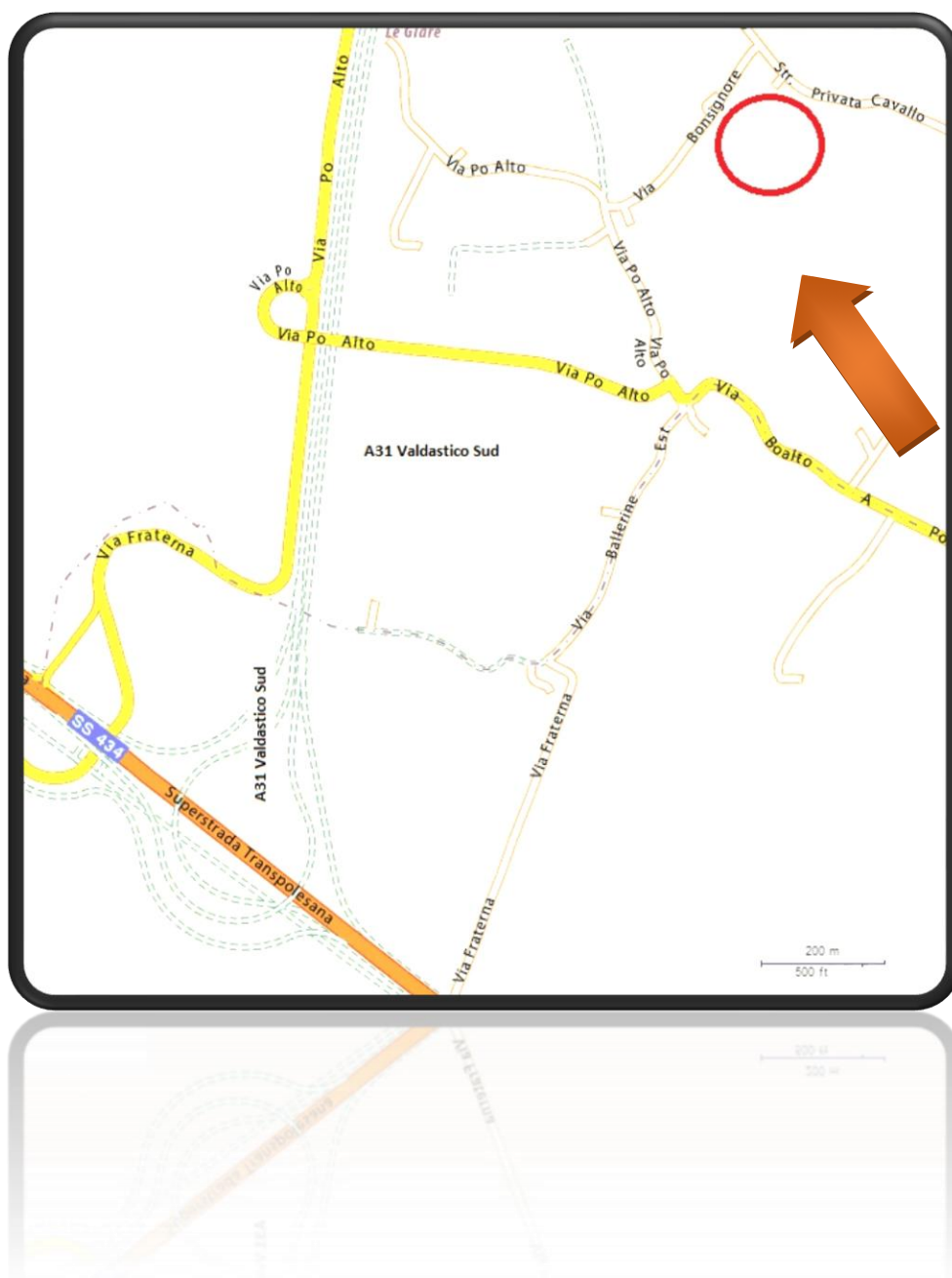




WHERE WE ARE

VIA STRADA CAVALLO 105 – 45021 SALVATERRA DI BADIA POLESINE (RO)

N 45.06994° - E 11.52215°



SERREMAR Italia S.r.l.

Serremar Italia S.r.l.

Registered Office:

VIA MAZZINI, 14 - 46100 MANTOVA (MN) Italia

Operational Headquarters:

Via Strada Cavallo, 105 – 45021 Salvaterra di Badia Polesine (RO)
Italia

Telephone:

+39 0425 645036

E-mail:

serremaritaliasrl@gmail.com

P. IVA: 02550500207 CF: 02550500207

