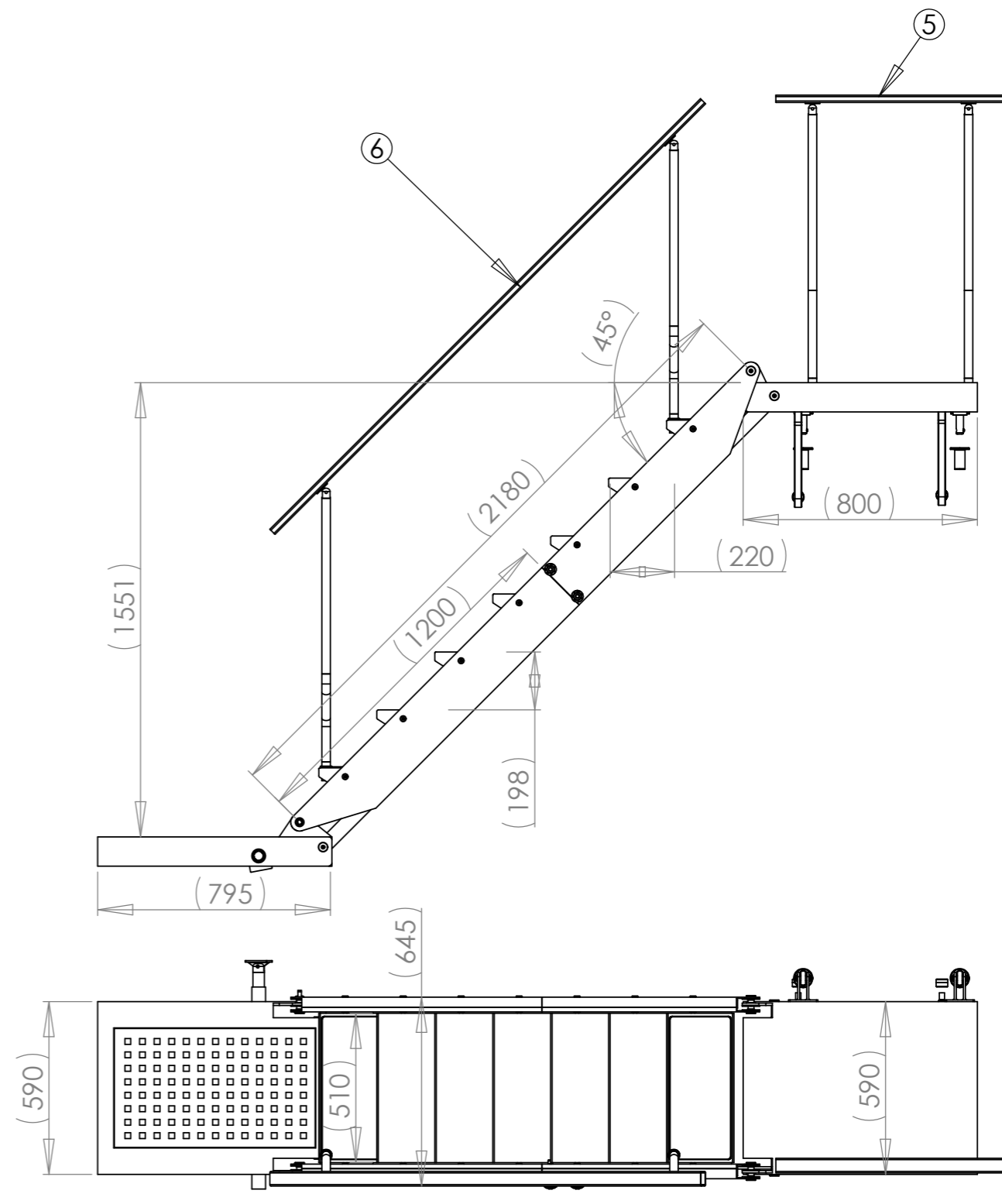
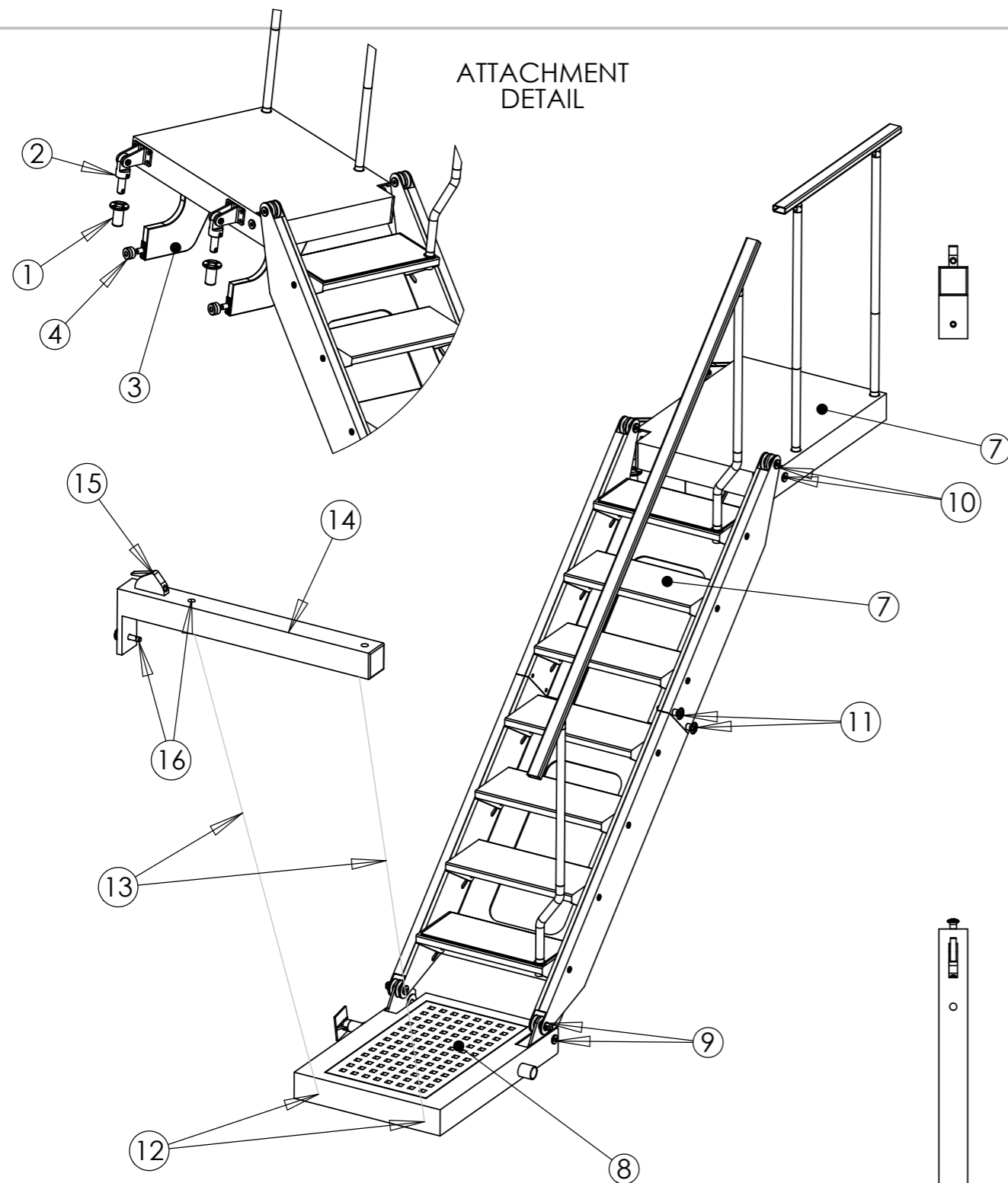


ATTACHMENT  
DETAIL



ID	DESCRIPTION	MATERIAL	FINISHING	NOTES
1	Deck Socket	Stainless steel AISI 316	Shiny polished	To be bolted on deck
2	Stair pins	Stainless steel AISI 316	Shiny polished	
3	Lower bracket	Carbon/epoxy	White painted	Removable
4	Adjustable protection	Stainless steel AISI 316	Shiny polished	Threaded, 40mm stroke
5	Top Pulpit	Carbon/epoxy	White painted	Removable, 50x25mm handrail, d=30mm stanchion
6	Main Pulpit	Carbon/epoxy	White painted	Removable, 50x25mm handrail, d=30mm stanchion
7	Teak plank	teak, 6mm	none	Black sealant
8	Teak Grating	Teak, 30mm	none	Black sealant
9	Lower platform pins	Stainless steel		pin.lock
10	Top platform pins	Stainless steel		pin.lock
11	Structure pins	Stainless steel		pin.lock
12	Folding padeye	Stainless steel AISI 316	Shiny polished	
13	Pull line	Spectra, 8mm	grey	
14	Lifting arm	Carbon/epoxy	White painted	Removable
15	Jammer	Spinlock-XTR Clutch	white	
16	Arm's pin	Stainless steel		pin.lock
MAX WORKING LOAD				200 Kg
BASIC WEIGHT				29 Kg

FINITURA:				NON SCALARE IL DISEGNO		REVISIONE 01	
WHITE PAINTED				CARBON EQUIPMENT Itd			
TITOLO:				REMOVABLE BOARDING STAIR			
N. DISEGNO				CH.358-801.01		A3	
MATERIALE:				CARBON EPOXY			
PESO: \$PRPSHEET:{Peso}				SCALA:1:50		FOGLIO 1 DI 1	