



Issued: 09/06/2021



ROAD & TRACK

PRODUCT NEWS

**TOYOTA GT86** 2012-

**GT86 2012-**

**PART NO:** SUS MP21 • **CHASSIS CODE:** ZN6



**DFV**

A more than 30 year long tradition of high-end racing commitments and state-of-the-art solutions within advanced suspension technology is now available for street cars all over the world. The focus has been clear from the very beginning – superior road handling without sacrificing comfort in your day-to-day transports. The time of compromises is over.

We have also added a clever light-weight design with a majority of the parts in aluminium and on top of that all shocks have suffered through vast corrosion tests according to ISO 9227. The end result is a 2-year limited warranty on all of our products - worldwide.

Öhlins Road & Track team has extensively tested a wide variation of springs to find the right balance between road and track use. By testing in different conditions on road as well on track, the listed spring rate is what we strongly recommend you to use.

#### GENERAL FEATURES

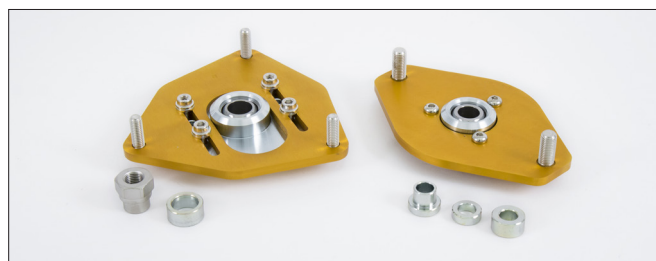
- > DFV (Dual Flow Valve)
- > Rebuildable
- > Corrosion salt spray tested (ISO 9227)
- > 2 year limited warranty
- > Springs ordered separately

#### FRONT FEATURES

- > McPherson strut
- > Single bleed adjuster
- > Spring preload adjuster
- > Height adjustable (approx. 20 mm lower than standard)
- > Coil springs
- > Use with original top mounts

#### REAR FEATURES

- > Conventional shock absorber
- > Single bleed adjuster
- > Spring preload adjuster
- > Height adjustable (approx. 15 mm lower than standard)
- > Coil springs
- > Use with original top mounts



**NOTICE!** Top mounts are not included, can be ordered separately. Part No: 25633-43 front left, 25633-44 front right, 25633-45 rear.

SPRINGS	PART NO	SPRING RATE
FRONT	48010-11	50 N/mm
REAR	48010-11	50 N/mm

OH LINS.COM OH LINSRACING @OH LINSRACING OH LINSRACING

**ÖHLINS RACING AB** • Instrumentvägen 8-10 S-194 51 Upplands Väsby Sweden • +46 8 590 025 00 • ohlins\_se\_info@driv.com