

Athesi, a product range adapted to all sectors of activity

Food manufacturing Maintenance
Smart Industry Real Estate Automotive
Government Transportation and Logistics
Emergency services Electric services Energy
Army Manufacturing Police Civil engineering
Engineering Warehouse Management Financial
Defence Public safety Construction Pharmaceutical
Catering Field Operations Oil & Gas Telecoms
Distribution Healthcare Logistics Public Sector
Retail Services Utilities Hospitality Security

Athesi, international distribution



Production Certifications





About Athesi

Founded in 2005, Athesi is a French company with head office in Bry Sur Marne near Paris. Team members are experts With more than 30 years' experience in automatic identification and professional mobility market.

Through its brand, Athesi offers a complete range of rugged products for professionals: Hand help and vehicle mount terminals, rugged smartphones, rugged tablets, industrial laptops and all business accessories specially adapted to field conditions of use, as well as barcode and RFID scanner.

Specialist on solutions for mobile professional users, Athesi makes every effort to ensure products meet business requirements as closely as possible by placing end users at the heart of its concerns.

Focused on its know-how as a hardware designer high technologies products, Athesi go to market is channel via partners.

Athesi network of international partners, leaders in mobile computing and integration with pre and post-sales technical support, provides comprehensive support adapted to each client project.

Athesi products are distributed throughout Europe Middle East Africa and Canada.

 **We want to make users life easier...**

Listening to the needs of its customers and drawing on its experience, Athesi regularly develops new products.

Leader in the professional mobility market, the main mission of Athesi is to offer a very complete range of products and associated services aimed at increasing the efficiency and productivity of its customers. Athesi thus offers products with technologies to manage all types of business applications in the fields of mobility, traceability and data collection.

Athesi supports its customers in their digital migration with a unique offer of customizable materials that meet all user needs. Athesi has always been an independent company with equity capital. The profits are reinvested as a priority each year in research and development guaranteeing strong sustainability of this French company on the national and international position.

All Athesi products are repaired in Athesi-approved repair centers at our certified maintenance distributors in Europe, Middle East and Africa.



La FRENCH TECH

Athesi, A whole range of product

Athesi offers several very complete ranges of products matching the needs of small, medium and large national or international companies.

Athesi products are suitable for all vertical markets that need rugged mobile devices, whatever their application. Customers can find the product that best meets their operational and financial requirements.

Because customers' needs are different and each customer is unique, Athesi designs and offers a wide range of products with differences such as hardness levels, service times, prices, accessories, upgradable, customization etc...

The product offer is declined as follows:



The Athesi Professional range

- Rugged smartphones and tablets
- Bundled configuration
- High quantity available on stock
- The best prices
- Product life cycle minimum 2 years
- 2-years standard warranty



The Athesi E-Serie range

- Rugged light and thin products
- Barcode scanner built-in optional
- High quantity available on stock
- Product life cycle minimum 3 years
- 3-years service contract



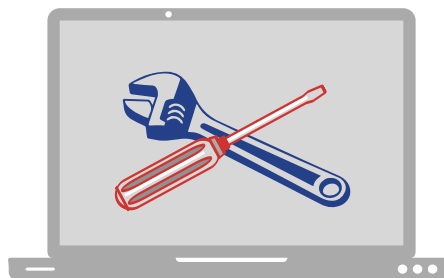
The Athesi R-Serie range

- High-level rugged and professional products
- The best-performance products
- High level of flexibility for configuration customization
- A very wide choice of business accessories
- Product life cycle minimum 5 years
- 3 to 5 years service contracts



The Athesi VMT, Panel PC and industrial Laptop range

- Vehicle or fixed Mount solutions
- Industrial design
- Product life cycle minimum 3 years
- 3 to 5 years service contract



The Athesi Software tools range

- Fleet Management
- Mobile device Management
- Mobile Application Management
- Mobile Content Management
- Remote control
- Kiosk builder



Support department

Athesi provides free dedicated support department to help you to make the best use of its products. The Hotline answers all questions and, as far as possible, helps to avoid a product return by providing the necessary support on line. This support is available for pre-sales and post-sales requests.



Customization department

Depending on project range, the «customization» department analyses the potential modifications and adaptations of the hardware and OS or firmwares. This department is also offering tailor-made solutions for specific factory processes (installation of masters, custom packaging, labelling, etc.) to optimize the supply chain and save time and money.

Repair department

Athesi European Services Centers for repairs are in France & Italy. Athesi is highly committed to ensure a high level of service and a well-managed lead time. Service Centers are composed by a team of engineers and specialized technicians, to be able to do any kind of repair. The after-sales staff is in permanent link with R&D, which allows a permanent qualitative evolution of the products. Athesi offers a range of standard or tailor-made service contracts to satisfy all requirements depending on the sector.



Logistic department

Athesi has large quantity of products available in stock in order to ensure short delivery time. Alike, a large quantity of spare parts enables us to offer an optimal quality of service and to commit deadlines for maintenance services. As soon as device is dispatched, a realtime tracking number is issued.

AP5501



AP5706



AP5705S



AP6501



OS	Android 13 GMS	Android 11 GMS	Android 10 / Android 12 AER - GMS	Android 11 GMS
Dimensions	158,2x76,7x14,6mm	159 x 79.4 x 18 mm	159.4x77.7x13.7 mm	175.9x82.5x14.25mm
Weight	234g	325g	275g	296g
Display	5,45" HD+ IPS/G +FF 720x1440px	5.7" HD+ IPS 720x1440px 5 points multi-touch 18:9	5.7" HD+ IPS 740x1440px 5 points multi-touch 18:9	6.52" HD+ IPS/G+FF 720x1440px
Brightness	450 nits	400 Nits	540 Nits	450 Nits
Connectivity	802.11 a/b/g/n/ac 4GLTE	802.11 a/b/g/n/ac 4GLTE	802.11 a/b/g/n/ac 4GLTE	80.11 a/b/g/n/ac 5GLTE
CPU	Mediatek Helio G25(MT6762G), Octa-core 2GHz Chipset	Mediatek Helio A25 MT6762 Octocore 4xCortexA53 1.8 GHz + 4xCortexA53 1.5 GHz	Mediatek Helio P22 Octocore 1.8GHz	Dimensity 6080 (MTK6833) Octa-core 2.2GHz
Memory	4GB RAM LPDDR4X 64 GB EMMC (TF 128GB)	4GB RAM LPDDR4X 64GB EMMC (TF 128GB)*	4GB RAM LPDDR4X 128GB EMMC (TF 128GB)	8GB RAM LPDDR4X 128GB EMMC (TF 1TB)
Camera	Front 5MP Rear 20MP	Front 8MP Rear 16.0MP+0,3MP+0,3MP	Front 13MP Rear 16MP + 8MP + 0.3 MP	Front 16mp Rear 48MP + 8MP + 2MP + 2MP
Barcode Reader	Through camera	Through camera	1D/2D dedicated reader N6603SR	Through camera
Fingerprint Face scanning	Facial	Embedded	Embedded	Embedded
NFC	Embedded	Embedded	Embedded	Embedded
Bluetooth	5.0	5.0	5.0	5.0
Battery	5 180mAh 5V Lithium Polymere	8580 mAh 5V Lithium-Polymer	5580 mAh 5V Lithium-Polymère	5 180mAh 5V Lithium Polymere
USB-C Charging	Yes	Yes	Yes	Yes
Wireless Charging	No	No	Yes	Yes
Earphones Jack	Jack 3,5mm	USB C	USB C	Jack 3,5mm
Navigation	GPS + GLONASS + BEIDOU + GALILEO	GPS + GLONASS + BEIDOU + GALILEO	GPS + GLONASS + BEIDOU + GALILEO	GPS + GLONASS + BEIDOU + GALILEO
Rugged Features	IP68 & IP69K 1,5m drop MIL-STD-810H antibacterial	IP68 & IP69K 1.5 m Drop MIL-STD-810G	IP68 1.5 m Drop MIL-STD-810G	IP68 & IP69K 1,5m drop MIL-STD-810H antibacterial
Temperature	-20°C to +60°C	-30°C to +60°C	-30°C to +60°C	-20°C to +60°C
IO	2 nano SIM Micro SD 128GB max USB-C	2 Nano-SIM (or 1 Nano-SIM, 1 TF) Micro SD 128GB USB C	2 Nano-SIM (or 1 Nano-SIM, 1 TF) Micro SD 128GB USB C	2 nano SIM Micro SD 1TB max USB-C
Softwares	Toolbox + FM radio + sound recorder + kiosk + easy launcher	Sound Meter + Compass + Flashlight + Inclinometer + Pic + Hanging + Height Measure + Magnifier + Dictaphone + Pedometer + Plumb Bob + Protractor	Sound Meter + Compass + Flashlight + Inclinometer + Pic + Hanging + Height Measure + Magnifier + Dictaphone + Pedometer + Plumb Bob + Protractor + Barcode Datacapture and Storage	Toolbox + FM radio + sound recorder + kiosk + easy launcher
Kiosk Mode	Embedded	Embedded	Embedded	Embedded
SOS Features	Embedded	Embedded	Embedded	Embedded
SAR - Head	0.55W/Kg	0.737 W/Kg	0.260 W/kg	0.308 W/Kg
SAR - Body	1.492W/Kg	1.322 W/Kg	0.589 W/kg	1.370 W/Kg
SAR - Members	3.114W/Kg	3.396 W/Kg	1.265 W/kg	-
Main Accessories	Single charge cradle, vehicle dock, cigarette light & power adaptor	Cigarette light & power adaptor	Single & 5 slots charge cradle, induction dock & vehicle charger	Cigarette light & power adaptor, induction dock & vehicle charger

AP8001 / AP1001 Display 8" / 10"



AP8003TL Display 8"



AP1002TL AP1002CL Display 10"



AP1003CL Display 10"



OS	Android 10 or Windows 10		Android 15	Android 14	Windows 11	Windows 11
Dimensions	8" 220x143x14 mm / 10.1" 266x174.4x15.7 mm		216x134x11.6mm	263x177x10,5 mm		260x174.7x12.7 mm
Weight	8" 650g / 10.1" 920g		506g	650g		930g
Display	800x1280 IPS 8" 5 pt multi touch / 10.1" 10 pt multi touch		8" 1200x1920px IPS 10 pt multi touch	10,1" 1200x1920 IPS 10 pt multi touch		10,1" 1200x1920 IPS 10 pt multi touch
Brightness	8" 450 Nits / 10.1" 400 nits		430 nits	400 Nits		700 nits
Connectivity	Wifi 802,11 a/b/g/n/ac HSDPA - HSUPA 3,8G/4GLTE		Wifi 6 5G	Wifi 802,11 a/b/g/n/ac 5G	Wifi 802,11 a/b/g/n/ac 4G	Wifi 6 4G
CPU	Android 10 Qualc, Snapdragon 625 8 Core MSM8953 2GHz	Windows 10 Intel QuadCore, Z8350 1,92GHz	Mediatek Dimensity 7050	Mediatek MT8781 8Core	Snapdragon 7C 2,4GHz	Intel N150 3,6GHz
Memory	4Go LPDDR3 64Go EMMC ROM		8Go LPDDR4X 128 Go uFS	8Go LPDDR4X 128 Go EMMC ROM	8Go LPDDR4X 128 Go EMMC ROM	8Go LPDDR5 128 Go EMMC ROM
Camera	Android 10 Front 5MP Back 13MP AF Flash	Windows 10 Front 2MP Back 5MP AF	Front 5MP Back 50MP AF	Front 5MP Back 13MP AF	Front 5MP Back 13MP AF Flash	
Barcode reader	Through Camera or connected in Bluetooth or USB		1D/2D integrated barcode reader (standard or flex)	1D/2D integrated barcode reader		1D/2D integrated barcode reader
NFC	Embedded		Embedded	Embedded		Embedded
Bluetooth	4.0 BLE		5.2 BLE	5.1		5.2 BLE
Battery	8" 7 500 mAh / 10.1" 10 000 mAh 3.7 V Li-Po		6 050 mAh 3,85V Li-Ion - échangeable	9 500 mAh 3,8V Li-Po	4 800 mAh 7.74V Li-Ion	4 800 mAh 7.74V Li-Ion
USB-C Charging	No		Yes	Yes		Yes
Earphones jack	Jack 3,5mm		USB-C	USB-C		USB-C
Navigation	GNSS GPS GLONASS		GNSS GPS GLONASS GALILEO - BEIDOU	GNSS GPS GLONASS GALILEO		GNSS GPS GLONASS
Rugged Features	IP67 MIL-STD-810G Shock and vibration 1,2m drop		IP67 MIL-STD-810H Shock and vibration 1,3m drop	IP65 MIL-STD-810H Shock and vibration 1,2m drop		IP67 MIL-STD-810H Shock and vibration 1.8m drop
Temperature	-20°C to +55°C		-10°C to +50°C	-20°C to +60°C		-20°C to +60°C
IO	TF SD x 1 Max 128 Go Micro USB 3,0 x 1 HDMI 1,4a Type C SIM x 1 Jack Audio		TF SD x 1 USB-C x 1 POGO Pin x 1 SIM x 1 e-SIM x 1	Support TF SD x 1 Max 512 Go USB 2,0 x 1 TG/PE SIM x 2		Support TF SD x 1 USB-C x 1 POGO Pin x 1 SIM x 1
Softwares	Accelerometer Compass Inclinometer		G sensor Geomagnetic Sensor Gyro sensor Capteur lumière	G sensor Geomagnetic Sensor (Compass) Gyro sensor		G sensor Geomagnetic Sensor Gyro sensor
Accessories	Handstrap Power supply		Dock station, batteries charger, power supply, handstrap	Dock station, physical keypad, bumper, handstrap, power supply, bumper with rotative handstrap		Dock station, physical keypad, rotative handstrap

Rugged Smartphones and PDA - E Series

E40



4 GB RAM, 64 GB ROM. Multi-touch touchscreen display. Micro SD. SIM. Charging connector on base. Rear camera 13 Mpx autofocus and flash. USB Type C. 162x73x19mm. Operating from -10°C to +55°C.
Shipped with : 4500 mA battery, hand strap, screen protection, USB power adapter.

Processor	OS	Display	Barcode Reader	RFID Reader	Communication	IP rating / Drops	Weight
Helio P22 (MT6762V) Cortex A53 Octo Core 2 GHz	Android 11 GMS	4" WVGA 480 x 800 300 Nits	1D/2D imager	HF 13,56MHz (NFC)	4G LTE, Wifi a/b/g/n Bluetooth 5.0, GPS	IP65 / 1.2m MIL STD 810G	250g

Low cost, removable battery, built-in keyboard, Android 11



Desktop dock
AT-CAE4001



Battery 4500 mA 3,8 V
AT-CAP4002



Holster belt clip
CARP10010



Cigar lighter charger
3760310040031



Power adapter USB
AT-CASPA4302

E50AT



E50AT Android 11 Atex Zone II. Microprocessor Mediatek Octa Core MT8768 2Ghz 64 bits, 4Gb RAM, 64 GbFlash. Display 5" HD 1280 x 720 tactile capacitive multi touch, Gorilla Glass, 500 nits, 4GLTE, GPS, Wifi 802.11 a/b/ac/g/n, Bluetooth V 5.0 BLE, NFC, APN front 5 Mpixels and rear 13 Mpixels autofocus et flash, Wlakie Talkie, Micro USB and docking connector, IP67, 1,5m drops.

Shipped with: Battery pack 5100 mA Snap-on charger with 1m USB 2.0 cable, hand strap, USB power adaptor, LCD protection applied.

Processor	OS	Display	Barcode Reader	RFID Reader	Communication	IP rating / Drops	Weight
Mediatek Octa Core MT8768 2Ghz 64 bits	Android 11 GMS	5" HD 1280x720 500 nits	Through camera	HF 13,56MHz (NFC)	Walkie Talkie,4G LTE, wifi a/b/g/n/ac bluetooth 5.0, GPS	IP67 / 1,5m MIL-STD-810G ATEX (II)	531g

An hybrid ATEX smartphone with an integrated Walkie Talkie



Dock Station
AT-CAE50AT01



Battery pack 5 100mA
AT-CAE50AT02



Snap on charger USB
AT-CAE50AT03



Handstrap
AT-CAE50AT04

Rugged Smartphones and PDA - E Series

E55



E55 Android 13. Microprocessor Mediatek Octa Core MT6765x Helio P35 2,3Ghz 64 bits, 4Gb RAM, 64 GbFlash. Display 5,5" Full HD 1080 x 2160 tactile capacitive multi touch, Gorilla Glass, 450 nits, 4GLTE, GPS, Wifi 802.11 a/b/ac/g/n/e/h/e/j/k/t/v/w, Bluetooth V 5.0 BLE, NFC, APN front 5 Mpixels and rear 13 Mpixels autofocus et flash, FIngerprint, Port micro SD, Connector USB-C and docking connector, IP68, 1,5m drops.

Shipped with: Battery pack 5000 mA USB-c cable, hand strap, USB power adaptor, LCD protection applied.

Processor	OS	Display	Barcode Reader	RFID Reader	Communication	IP rating / Drops	Weight
Mediatek Octa Core MT6765x Helio P35 2,3Ghz 64 bits	Android 13 GMS	5.5" HD 720x1440 450 nits	1D/2D Imager SE4710	HF 13,56MHz (NFC)	4GLTE, wifi a/b/g/n/ac, bluetooth 5.0, GPS	IP68 / 1,5m MIL-STD-810G	249g

Removable battery, light and thin, physical function keys.



Dock Station
AT-CAE5501



4 slots charger
AT-CAE5508



Battery pack 5 000mA
AT-CAE5502



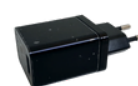
Handstrap
AT-CAE5504



Pistol grip
AT-CAE5506



Cigarette Light adapter
3760310040031



Power adapter
3760310040048

E550RFID



Android 13, Mediatek Octa Core MT6762 2Ghz 64 bits, 4Gb RAM, 64 GbFlash Display 5,5" 720 x 1440 tactil capacitive multi touch, Gorilla Glass, 400 nits, 4GLTE, GPS, Wifi 802.11 a/b/ac/g/n, Bluetooth V 4,2 BLE, 5 Mpixels at the front and 13 Mpixels autofocus and flash at the back, micro SD, 2xSIM, 2xSAM, USB-C and dock connectors, IP65, 1,5m drops.

Shipped with: Battery pack (5200 mA for compact version & 7200mA for GUN version), USB-C cable, USB power supply.

Processor	OS	Display	Barcode Reader	RFID Reader	Communication	IP rating / Drops	Weight
MT6762Cortex A73 2,0GHz Octocore	Android 13	5.5" HD 720x1440 400 nits	1D/2D N5703	LF: 125kHz 134kHz UHF: 26dbm (compact) UHF: 33dbm (GUN)	4GLTE, wifia/b/g/n/ac, bluetooth 4,2, GPS	IP65 / 1,5m MIL-STD-810G	500g

2 ergonomies dedicated for your RFID UHF and LF solutions.



Desk Dock
AT-CAE550RFID01
AT-CAE550RFID02 (GUN)



Battery
AT-CAE550RFID03
AT-CAE550RFID04 (GUN)



Power adapter



Cigarette light adpater
3760310040031

E65



Android 14, MTK dimensity 700 2,2 Ghz OctoCore, 8Go RAM, 128Go Flash, Display 6,5" 720x1600 450nits, 5G, Wifi 5, Bluetooth 5.3, GPS, NFC, Camera 13mpixels Autofocus flash at the back, webcam 5Mp, accelerometer, light captor, USB-C client, port μSD, swappable battery 5000 mA 3,8V, IP67, 1.5m drops.

Shipped with: Battery 5 000mA 3,8V, power supply, handstrap and LCD protection applied.

Processor	OS	Display	Barcode Reader	RFID Reader	Communication	IP rating / Drops	Weight
MTK Dimensity 700 2,2 GHz Octocore	Android 14	6,5" HD 720X1600 450 nits	1D/2D SE4710	HF 13,56MHz (NFC)	5G, Wifi a/b/g/n/ac, BT 5,3, GPS	IP67/1,5m MIL-STD-810H	285g

Smartphone 5G, Android 14 , high performance rate, swappable battery.



Desk Dock
AT-CAE6502



4 slots battery charger
AT-CAE6507



Battery 5000mA
AT-CAE6501



Handstrap
AT-CAE6503



Bumper



Cigarette light adpater
3760310040031



Holster belt clip
AT-CAE606



Pistol grip
AT-CAE6506

6" and 8" Rugged Tablet - E Series

E6C



4 GB RAM, 64 GB FlashROM, USB 2.0 client, micro SD, micro SIM. Rear camera 8 Mpx autofocus and front camera 2 Mpx. Accelerometer, brightness sensor. Gorilla Glass 3. 720x1280 pixels capacitive and multi-touch display. Micro USB and docking connector. 185x94x26mm. Operating from -10°C to 50°C.
Shipped with: 5000 mA/3,7V battery pack, hand strap, USB power adapter.

Processor	OS	Display	Barcode Reader	RFID Reader	Communication	IP rating / Drops	Weight
Intel Atom Cherrytrail-T Z8350 Quad Core 1,92GHz	Windows 10	6" HD 720X1280 430 nits	1D/2D imager	HF 13,56MHz (NFC)	4G LTE, Wifi a/b/g/n Bluetooth 4.0, GPS	IP65 / 1.2m MIL STD 810G	380g

Windows 10 x64 in 6-inch tablet, removable battery, very rugged.



Ethernet desktop dock
AT-CAE603B

Battery 5000mA 3,7V
AT-CAE601

Holster belt clip
AT-CAE606

Hand strap
AT-CAE604

Cigar lighter charger
AT-CASPA4308

Power adapter USB
AT-CAE602

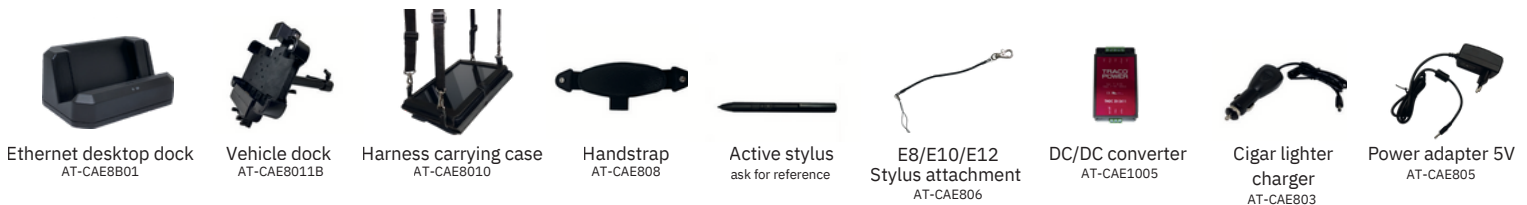
Forearm support
AT-CAE55L09

E8B



Windows 10. 4 GB RAM, 128 GB EMMC. Brightness Sensor. Rear camera 5 Mpx autofocus and front camera 2 Mpx. Accelerometer. 2x USB 2.0, audio jack, mini HDMI, micro SD. 8300 mA 3,7V internal battery. 228x145x16.5mm. Operating from -10°C to 50°C.
Shipped with: hand strap, micro USB cable, power supply.

Processor	OS	Display	Barcode Reader	RFID Reader	Communication	IP rating / Drops	Weight
Intel Atom Cherrytrail-T Z8350 Quad Core 1,92GHz	Windows 10	8" 1280 x 800 400 Nits	1D/2D imager	HF 13,56MHz (NFC)	4G LTE, Wifi a/b/g/n Bluetooth 4.0, GPS	IP67 / 1.2m MIL STD 810H	710g



Ethernet desktop dock
AT-CAE8B01

Vehicle dock
AT-CAE8011B

Harness carrying case
AT-CAE8010

Handstrap
AT-CAE808

Active stylus
ask for reference

E8/E10/E12 Stylus attachment
AT-CAE806

DC/DC converter
AT-CAE1005

Cigar lighter charger
AT-CAE803

Power adapter 5V
AT-CAE805

E8E and E8T Gen2



8Go RAM et 128 Go ROM, écran 8", 1920 x 1200 Full HD tactile capacitif, 550 nits, GPS. Wifi 802.11 a/b/g/n/ac, Bluetooth, Camera avant **5 Mpixels E8E / 8 Mpixels E8T** et arrière **8 Mpixels autofocus E8E / 16 Mpixels autofocus E8T**, G sensor, capteur luminosité, 1 USB 3.0 type A, 1 USB-C, 1 USB 2 audio jack, micro HDMI, micro SD, batterie échangeable, IP65, 1,2m drops.

Shipped with : Battery 5000 mA, hand strap, Power supply, 1 USB cable, LCD protection.

Device	Processor	OS	Display	Barcode Reader	RFID Reader	Communication	IP rating / Drops	Weight
E8E	Intel Alder Lake N100/N150	Windows 11 Linux	8" 1920 x 1200 Full HD tactile capacitif 550 nits	1D/2D	HF 13,56MHz (NFC)	4G LTE, wifi a/b/g/n/ac, BT 5 (BLE), GPS	IP65, 1,2m MIL-STD-810H	910g
E8T	Mediatek 8781 2,2GHz octocore	Android 12	8" 1920 x 1200 Full HD tactile capacitif 550 nits	1D/2D	HF 13,56MHz (NFC)	4G LTE, wifi a/b/g/n/ac, BT 5.2 (BLE), GPS	IP65, 1,2m MIL-STD-810G	910g

A powerful 8" with swappable battery.



Ethernet desktop dock

4 slots batteries charger

Battery

Vehicle dock

Handstrap w/o rotative

Power adapter

Cigar lighter charger

Tablettes durcies 10'' - Série E

E10E



Windows 11 Pro Entreprise / Linux. Intel Jasper Lake N5100, 8 GB RAM, 128 GB EMMC. Brightness sensor. Rear camera 8 Mpx autofocus and front camera 5 Mpx. Accelerometer. USB 3.0 type A, USB-C, audio jack, mini HDMI, micro SD, SIM. RS232, RJ45. 5 000 mA 7.6V swappable battery. 275x189x23mm. Operating from -20°C to 60°C.

Shipped with: Battery pack 5000mA 7.6V, hand strap, USB-c cable, power supply.

Processor	OS	Display	Barcode Reader	RFID Reader	Communication	IP rating / Drops	Weight
Intel Jasper Lake N100	Windows 11 Linux	10.1'' 1920 x 1200 1000 Nits	1D/2D imager	HF 13,56MHz (NFC)	4G LTE, Wifi 6 Bluetooth 5.0, GPS	IP65 / 1.2m MIL STD 810H	1140g

E10BC



Windows. 8 GB RAM, 128 GB SSD. Brightness sensor. Rear camera 8 Mpx autofocus and front camera 2 Mpx. Accelerometer. USB 3.0, USB 2.0, audio jack, mini HDMI, micro SD, SIM. RS232, RJ45. 280x187x22mm. Operating from -10°C to 50°C.

Shipped with: 5000 mA 7,4V battery pack, hand strap, micro USB cable, power supply.

Processor	OS	Display	Barcode Reader	RFID Reader	Communication	IP rating / Drops	Weight
Core I5 Amberlake I5 8200Y 3,9 Ghz	Windows 10	10.1'' 1920 x 1200 400 Nits	1D/2D imager	N/A	4G LTE, Wifi a/b/g/n Bluetooth 4.2, GPS	IP65 / 1.2m MIL STD 810G	1210g

E10AT



E10AT Windows 10 or 11 Atex Zone II. Intel JasperLake Celeron N5100 2,8Ghz, Screen 1920 x 1200 Full HD tactile capacitive, 400 nits, GPS. Wifi 802.11 a/b/g/n/ac, Bluetooth Rev 5.0.BLE, Camera front 5 Mpixels and rear 8 Mpixels autofocus, G sensor, light sensor, 1 USB 3.0 type A, 1 USB-C, audio jack, micro HDMI, micro SD. RJ45, removable battery 5000 mA 7,67V, IP65, 1,2m drops.

Shipped with: hand strap, Carry handle, Power supply, 1 USB cable, LCD protection.

Processor	OS	Display	Barcode Reader	RFID Reader	Communication	IP rating / Drops	Weight
Intel JasperLake Celeron N5100 2,8Ghz	Windows 11	10.1'' 1920 x 1200 400 nits	through camera	HF 13,56MHz (NFC)	4GLTE, wifi a/b/g/n/ac, bluetooth 5.0, GPS	IP65 / 1,2m MIL-STD-810H ATEX (II)	1 140g

E10T



8 Go RAM 128Go ROM, full HD tactile capacitive 1920 x 1200 px, GPS. Wifi, Bluetooth. Rear Camera 13 Mpixels autofocus and front 5 Mpixels , G sensor, light sensor, 1 USB 3.0, 1 USB-C 2,0, audio jack, micro HDMI, micro SD. RS232 (E10T), RJ45, removable Battery 10000 mA 3,7V, IP65, 1,2m drop.

Shipped with : Battery pack 10000 mA 3,7V, handstrap, LCD protection , 1 USB cable, Power supply.

Processor	OS	Display	Barcode Reader	RFID Reader	Communication	IP rating / Drops	Weight
Qualcomm MC6490 2.7 Ghz OctoCore	Android 14 GMS	10.1'' 1920 x 1200 1000 Nits	1D/2D imager	HF 13,56MHz (NFC)	5G LTE, Wifi 6E Bluetooth 5.2, GPS	IP65 / 1.2m MIL STD 810h	1020g
Mediatek MT6789 2.2 Ghz OctoCore	Android 14 GMS	10.1'' 1920 x 1200 700 Nits	n/a	HF 13,56MHz (NFC)	4G LTE, Wifi b,g,n,ac Bt 5.1, GNSS RTK	IP65 / 1.2m MIL STD 810h	1020g
Mediatek MT6789 2.2 Ghz OctoCore	Android 14 GMS	10.1'' 1920 x 1200 1000 Nits	n/a	HF 13,56MHz (NFC)	4G LTE, Wifi b,g,n,ac Bt 5.1, GPS	IP65 / 1.2m MIL STD 810h	1020g

Rugged, multiple accessories, Windows, Android or Linux, direct ethernet port, RS232 port. Atex Zone 2 solution.



ethernet / USB Desktop Dock



Vehicule Dock with key lock, Ethernet, DC jack, 2 USB, RS232 DB9, fixation kit



Additional Removable battery



Harness



Handstrap



Cigarette light charger



4 batteries charger



Power supply



DC/DC converter



Passive & Active Stylus



keypad with protection



VESA plate

12'' Rugged Tablets - E Series

E12T



Android 10 GMS. 4GoRAM, 64Go SSD, Qualcomm SnapDragon 625 2Ghz OctoCore or Android 14 GMS. 8GoRAM, 128Go SSD, Qualcomm SnapDragon 690 2Ghz OctoCore, Screen 1920 x 1200 tactile 10 points capacitive, 300 nits, GPS. Wifi 802. 11 b/g/n/ac, Bluetooth Rev 4.2.

Camera 13 Mpixels autofocus at the back and 5 Mpixels at the front, G sensor, 1 USB 3.0, 2 USB 2.0, audio jack, HDMI, micro SD. RS232, RJ45, swappable battery 12600 mA 3,7V, IP65, 1,2m drops.

Shipped with: hand strap, Carry handle, Power supply, 1 USB cable.

Processor	OS	Display	Barcode Reader	RFID Reader	Communication	IP rating / Drops	Weight
Qualcomm SnapDragon 625 2Ghz OctoCore	Android 10 GMS	12.2'' 1920 x 1200 300 Nits	1D/2D imager	HF 13,56MHz (NFC)	4G LTE, Wifi a/b/g/n Bluetooth 4.0, GPS	IP65 / 1.2m MIL STD 810G	1480g
Qualcomm SnapDragon 690 2Ghz OctoCore	Android 14 GMS	12.2'' 1920 x 1200 650 Nits	1D/2D imager	HF 13,56MHz (NFC)	5G LTE, Wifi a/b/g/n/ac Bluetooth 5.1, GPS	IP65 / 1.2m MIL STD 810G	1480g

Widescreen display, various accessories, RS232 and Ethernet port, high performance version (with KabyLake processor).



E10/E12
Ethernet desktop dock
AT-CAE1201
AT-CAE1201K



Additional
removable battery
AT-CAE1205
AT-CAE1205K



Cigar lighter charger
AT-CAE803



Hand strap
AT-CAE1206



Harness strap
AT-CAE1207B



Shoulder strap
AT-CAE1207



Power adapter
AT-CAE805
AT-CAE1202



Removable QWERTY
keyboard
AT-CAE1210



DC/DC con verter
AT-CAE1005



Stylus attachment
AT-CAE806



Active stylus
ask for reference



The industrial range,
Athesi E Series

Athesi
Smartphones & Tablets



Fix or vehicle mount terminals - E Series

EVM8



4GBRAM/64Gb Flash, GPS, 8" display HD 800 x 1280 tactile capacitive, 1000 nits, Wifi 802.11 a/b/g/n/ac, Bluetooth Rev 5.0, USB 3.0 Type A x1, 4GLTE, 1000M Ethernet (M12- 8 pin connector), 1 RS232 + 1 RS232/RS485 (M12 -12 pin connector), 2 x USB 2,0 + 1 CAN/CVBS (M12 -12 pin connector), input voltage 11-24V, IP65, operate temp -20°C to 60°C.

Shipped with: 8-pin power cable.

Processor	OS	Display	Barcode Reader	RFID Reader	Communication	IP rating / Drops	Weight
Intel Jasperlake N5100	Windows 10 / Linux	8" HD 800X1280 1000 nits	Through RS232 or USB	Optional NXP300	4G LTE, Wifi a/b/g/n/ac Bluetooth 5.0, GPS	IP65 / 1.2m MIL STD 810G	620g

Possibility of having an optional internal battery to maintain the charge in the event of micro cuts.

EVM8A



EVM8A Android 12. 4GBRAM/64Gb Flash, GPS, 8" display HD 800 x 1280 tactile capacitive, 1000 nits, Wifi 802.11 a/b/g/n/ac, Bluetooth Rev 5.2, USB 2.0 Type A, 4GLTE, 1000M Ethernet (12 pin connector), 1 RS232 + 1 RS232/RS485 (12 pin connector), 1 USB 2,0 + 1 CAN/CVBS (12 pin connector), input voltage 12V, IP65, operate temp -20°C to 60°C.

Shipped with: Power cable 8 pin terminal port to DC with power supply, power cable direct to battery, Wifi /4GLTE/GPS antennas, ethernet cable, USB/CAN/CVBS Cable, RS232/485 cable.

Processor	OS	Display	Barcode Reader	RFID Reader	Communication	IP rating / Drops	Weight
ARM octo-core 2,2GHz	Android 12	8" HD 800x1280 1000 nits	Through RS232 or USB	Through RS232 or USB	4GLTE, wifi a/b/g/n/ac, bluetooth 5.2, GPS	IP65 / 1,2m MIL-STD-810G	620g

Possibility of having an optional internal battery to maintain the charge in the event of micro cuts.

EVM10



4GBRAM/64Gb Flash, GPS, 10" display HD 800 x 1280 tactile capacitive, 1000 nits, Wifi 802.11 a/b/g/n/ac, Bluetooth Rev 5.0, USB 3.0 Type A x1, 4GLTE, 1000M Ethernet (M12-8 pin connector), 1 RS232 + 1 RS232/RS485 (M12-12 pin connector), 2 x USB 2,0 + 1 CAN/CVBS (M12-12 pin connector), input voltage 11-24V, IP65, operate temp -20°C to 60°C.

Shipped with: 8 pin power cable.

Processor	OS	Display	Barcode Reader	RFID Reader	Communication	IP rating / Drops	Weight
Intel Jasperlake N5100	Windows 10 / Linux	10.1" HD 800X1280 1000 nits	Through RS232 or USB	Optional NXP300	4G LTE, Wifi a/b/g/n/ac Bluetooth 5.0, GPS	IP65 / 1.2m MIL STD 810G	830g

Possibility of having an optional internal battery to maintain the charge in the event of micro cuts.

EVM10A

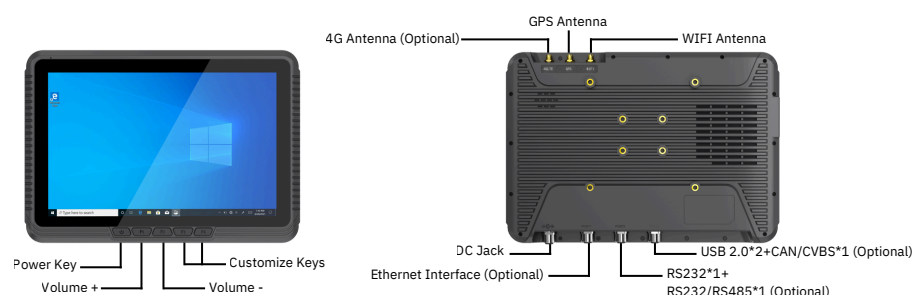


EVM10A Android 12. 4GBRAM/64Gb Flash, GPS, 10" display HD 800 x 1280 tactile capacitive, 1000 nits, Wifi 802.11 a/b/g/n/ac, Bluetooth Rev 5.2, USB 2.0 Type A, 4GLTE, 1000M Ethernet (12 pin connector), 1 RS232 + 1 RS232/RS485 (12 pin connector), 1 USB 2,0 + 1 CAN/CVBS (12 pin connector), input voltage 12V, IP65, operate temp -20°C to 60°C.

Shipped with: Power cable 8 pin terminal port to DC with power supply, power cable direct to battery, Wifi /4GLTE/GPS antennas, ethernet cable, USB/CAN/CVBS Cable, RS232/485 cable.

Processor	OS	Display	Barcode Reader	RFID Reader	Communication	IP rating / Drops	Weight
ARM octo-core 2,2GHz	Android 12	10.1" HD 800x1280 1000 nits	Through RS232 or USB	Through RS232 or USB	4GLTE, wifi a/b/g/n/ac, bluetooth 5.2, GPS	IP65 / 1,2m MIL-STD-810G	830g

Possibility of having an optional internal battery to maintain the charge in the event of micro cuts.



Panel & industrial PC

EPC10A



EPC15A



EPC21A



EPC10A/EPC15A/EPC21A Android 12. CPU Rockchip RK3568, 4GbRAM/64Gb Flash, 10.1"/15.6"/21.5" display Full HD 1920 x 1080 tactile capacitive, Wifi 802.11 b/g/n, Bluetooth Rev 4.0, USB 3.0 Type A, USB 3.0 OTG Type A, GPS, DC Jack 12V, 1000M Ethernet 1 x RJ45, 2 x RS232 DB9, 1 x HDMI, 1 x mini PCIE extension slot, 3,5mm DC jack earphone.

Shipped with: Power cable and power supply, Wifi antenna, fixing grips.

Processor	OS	Display	Keys	Scanners	Communication	IP rating / Drops	Weight
Rockchip RK3568	Android 12 GMS	10.1"/15.6"/21.5" Full HD 1920 x 1080	Through RS232 or USB	Through RS232 or USB	wif a/b/g/n/ac, bluetooth 4.0, ethernet	IP65 front panel	2 kg 2,4 kg 5,05 kg

EPCE



Aluminium Alloy casing, 8 or 16 Go RAM, 128Go or 256Go or 512Go SSD, Wifi 6, Bluetooth Rev 5.1, 4 x USB 3.0 Type A, DC JACk 19V (support 12-24V), 1000M Ethernet 2 x RJ45, 2 x RS232 DB9, 1 x HDMI, 1 x M2 extension slot

Shipped with : Power cable and power supply

Processor	OS	Display	Keys	Scanners	Communication	IP rating / Drops	Weight
Intel Celeron N5100 Intel Core I5 1235U Intel Core I7 1255U	Windows 11	-	Through RS232 or USB	Through RS232 or USB	4G (optionel) Wifi 6 Bluetooth 5.1	MIL STD 810H	1000g

Industrial use 24/7, multiples interfaces including ethernet and RS232 , rugged.

EPC10



EPC10 Windows 11 Iot. CPU Intel Celeron Jasperlake N5100, 8GbRAM/128Gb SSD, 10,1" display Full HD 1920 x 1080 tactile capacitive, Wifi 802.11 ac, Bluetooth Rev 5.0, 1 x USB 3.0 Type A, 2 x USB 2 Type A, GPS, 4GLTE, DC Jack 12V, 1000M Ethernet 2 x RJ45, 2 x RS232 DB9, 1 x HDMI, 1 x M2 extension slot, 3,5mm DC jack earphone.

Shipped with: Power cable and power supply, Wifi antenna, fixing grips.

Processor	OS	Display	Keys	Scanners	Communication	IP rating / Drops	Weight
Intel Celeron N5100 2,8Ghz	Windows 11	10.1" Full HD 1920 x 1080	Through RS232 or USB	Through RS232 or USB	wif a/b/g/n/ac, bluetooth 5.0, ethernet	IP65 front panel	2 Kg

EPC15



EPC15 Windows 11 Iot. CPU Intel Celeron Jasperlake N5100, 8GbRAM/128Gb SSD, 15,6" display Full HD 1920 x 1080 tactile capacitive, Wifi 802.11 ac, Bluetooth Rev 5.0, 1 x USB 3.0 Type A, 2 x USB 2 Type A, GPS, 4GLTE, DC Jack 12V, 1000M Ethernet 2 x RJ45, 2 x RS232 DB9, 1 x HDMI, 1 x M2 extension slot, 3,5mm DC jack earphone.

Shipped with: Power cable and power supply, Wifi antenna, fixing grips.

Processor	OS	Display	Keys	Scanners	Communication	IP rating / Drops	Weight
Intel Celeron N5100 Intel Core I5 1235U	Windows 11	15.6" Full HD 1920 x 1080	Through RS232 or USB	Through RS232 or USB	4G LTE (option) wif a/b/g/n/ac, bluetooth 5.0, ethernet	IP65 front panel	2,4Kg

EPC21



EPC21 Windows 11 Iot. CPU Intel Alderlake I5-1235U, 8GbRAM/128Gb SSD, 21,5" display Full HD 1920 x 1080 tactile capacitive, Wifi 6, Bluetooth Rev 5.1, 4 x USB 3.0 Type A, GPS, 4GLTE, DC Jack 12V, 1000M Ethernet 2 x RJ45, 2 x RS232 DB9, 1 x HDMI, 1 x M2 extension slot, 3,5mm DC jack earphone.

Shipped with: Power cable and power supply, Wifi antenna, fixing grips.

Processor	OS	Display	Keys	Scanners	Communication	IP rating / Drops	Weight
Intel Core I5 1235U	Windows 11	21.5" Full HD 1920 x 1080	A travers RS232 ou USB	À travers la RS232 ou l'USB	wifi 6, bluetooth 5.1, ethernet	IP65 front panel	5.05Kg

4.3" Smartphones and 8" Rugged Tablets - R Series

RT4300



8 Go RAM, 128 Go FlashROM. Rear camera 13 Mpx autofocus Capacitive multi-touch display. Gorilla Glass, micro SD, SIM, USB-C. Accelerometer. Light sensor. Operating from -20°C to 50°C. **-30°C optional**
Shipped with: 6700 mA 3,7V Lithium ION polymer battery pack, hand strap, USB-C cable, power supply.

Processor	OS	Display	Barcode Reader	RFID Reader	Communication	IP rating / Drops	Weight
Mediatek G99 Cortex A76 et A55 Octo Core 2.2 GHz	Android 14 GMS	4.3" 480x800 450 Nits	1D/2D imager SE4710 STD SE55 FLEX EX30 LR	HF 13,56MHz (NFC)	4G LTE, Wifi a/b/g/n/ac/d/e/h/i/j/ k/r/v/w, Bluetooth 5.2, AGPS	IP68 / 1.8m MIL STD 810H	449g

Removable battery, very rugged, built-in hand strap or gun, 2D long range barcode scanner, USB-C slot, variable type of keyboard.



Keypad 29 keys



Keypad 38 keys



Keypas 47 keys



Destock dock
AT-CART450001



4 slots desktop charger
AT-CART430009



4 slots batteries charger
AT-CART430006



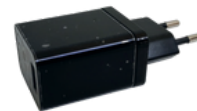
Battery 6700 mA
AT-CART430003
Battery 6700 mA -30°C
AT-CART430003L



Bumper



Pistol Grip
AT-CART430005



Power adapter
AT-CART430002



For industrial use

8", 10", 12" and 14" Rugged Tablets - R Series

RT80



4 GB RAM, 128 GB SSD MLC. Rear camera 8 Mpx autofocus and front camera 2 Mpx. G-sensor. Brightness sensor. NFC. USB 2.0, USB 3.0, audio jack, micro HDMI, micro SD, SIM. 160 mA 3,7V internal battery. 232.6x150x22mm. Operating from -10°C to 50°C.

Shipped with: 11850 mA 3,8V hot-swappable battery pack, hand strap, carrying handle, stylus and stylus attachment, screen protection, power supply.

RT80A



Device	Processor	OS	Display	Barcode Reader	RFID Reader	Communication	IP rating / Drops	Weight
RT80	Intel Atom Cherrytrail-T Z8550 2,4GHz Quad Core	Windows 10	8" 1280 x 800 370 Nits	1D/2D imager	HF 13,56MHz (NFC)	4GLTE, Wifi a/b/g/n/ac, Bluetooth 4.1, GPS	IP65 / 1.5m MIL STD 810G	910g
RT80A	Rockchip RK3399 2GHz Hexa Core	Android 9 GMS	8" 1280 x 800 470 Nits	1D/2D imager	HF 13,56MHz (NFC)	4GLTE, Wifi a/b/g/n/ac, Bluetooth 4.2, GPS	IP65 / 1.5m MIL STD 810G	910g

Android or Windows platform, hot-swappable battery, industrial accessories, extended connectivity, very rugged.



Desktop dock
AT-CART12201
AT-CART8001B



Vehicle dock
AT-CART12202
AT-CART101B01
AT-CART8002B



Battery
AT-CART12204
AT-CART10102
AT-CART8004



4 slots batteries charger
AT-CART12210
AT-CART8010



Harness carrying case
AT-CART12205
AT-CART10105
AT-CART8017



Carrying handle
AT-CART12206
AT-CART8007



Hand strap
AT-CART12205
AT-CART10103
AT-CART8006

RT110



8Go/16GoRAM, 128Go SSD. GPS, 4GLTE, NFC. full HD 1920x1200px tactile capacitive, 700 nits, Wifi 802.11 a/b/g/n/ac, Bluetooth Rev 4.2. APN 8 Mpx autofocus at the back and 2 Mpx at the front. G-sensor. light captor. USB 3.0 and USB type C, audio jack, RJ45 Ethernet, mini HDMI, micro SD. hot swappable battery 5000 mA 7,4V (RT110) ou 6300 mA 7,4V (RT120). internal battery 860mA 7,4V. IP65. 1,2m drops.

Livree avec : Battery, handstrap, carrying handle, protected screen applied, power supply.

RT120



Device	Processor	OS	Display	Barcode Reader	RFID Reader	Communication	IP rating / Drops	Weight
RT110	Intel Jasperlake N150 Core I5 1235U	Windows 10/11	10.1" 1920 x 1200 700 Nits	1D/2D imager	HF 13,56MHz (NFC)	4GLTE, Wifi a/b/g/n/ac, Bluetooth 4.2, GPS	IP65 / 1.2m MIL STD 810G	1140g
RT120	Intel Jasperlake N150 Core I5 1235U Core I7 8550U Core I7 1255U	Windows 10/11	12.2" 1920 x 1200 680 Nits	1D/2D imager	HF 13,56MHz (NFC)	4GLTE, Wifi a/b/g/n/ac, Bluetooth 4.2, GPS	IP65 / 1.2m MIL STD 810G	1955g

Hot swappable battery, industrial accessories, extended connectors, high performance with Core I7 processor.



Hand strap
AT-CART12006



Shoulder strap
AT-CAE1207



Cigar lighter charger
AT-CART12212



Harness strap
AT-CAE1207B



Power adapter
AT-CAE12002



Vehicle dock
AT-CART12005



Desktop dock
AT-CART12001

RT140



16Go or 32Go RAM, 256Go SSD. GPS, 4GLTE/5GLTE, NFC. full HD 1920x1080px tactile capacitive, 1000 nits, Wifi 6, Bluetooth Rev 5.1. Rear APN 13 Mpx autofocus and 5 Mpx at front. G-sensor. Light Sensor. USB 3.0, USB 2.0 et USB type C Thunderbolt, audio jack, RJ45 Ethernet, mini HDMI, micro SD, RS232. Hot swappable Battery 4850 mA 11.55V . Internal Battery 1300mA 11,1V. RTC. IP65. 1,2m drops.

Shipped with : battery, handstrap, carrying handle, protected screen applied, power supply.

Device	Processeur	OS	Ecran	Lecteur code barres	Lecteur RFID	Communication	Indice IP / Chute	Poids
RT140	Intel Core Ultra 5 125H Intel Core Ultra 7 155H	Windows 11	14" 1920 x 1080 1000 Nits	1D/2D imager	HF 13,56MHz (NFC)	5GLTE (option), 4GLTE, Wifi 6, Bluetooth 5.1, GPS	IP65 / 1.2m MIL STD 810H	2300g

14" and 15" Rugged Laptop - R Series

RT14



16Go/32Go RAM DDR5, 2 x SSD M2, 14" Screen full HD 1920 x 1080 700 nits, TPM 2,0, High-Speed Wifi 6, Bluetooth Rev 5.1. GPS. Front camera 2 Mpixels, Fingerprint, light sensor, USB 2,0 Type-A x 1, USB 3.0 Type-A x 3, SIM Card x 1, audio jack, RJ45 Ethernet x2, HDMI x 1, SD card x 1, RS232 DB9 x 1, 5PIN Pogo Pin x1, hot-swappable battery 4850 mA 11,55V, internal battery 1300mA 11,1V, IP65, 1.2m drops.
Shipped with: battery 4850 mA 11,55V, AZERTY or QWERTY keyboard, power supply.

Processor	OS	Display	Barcode Reader	RFID Reader	Communication	IP rating / Drops	Weight
iCore5 1235U iCore7 1255U Core Ultra 7 155H Core Ultra 5 125H	Windows 11	14" HD 1080X1920 1000 nits	No	NXP300 (Option)	BT 5.1, Wi-Fi 6 802.11a,b,d,e,g,h,i, k,n,r,u,v,w,ac,ax 4GLTE / 5G	IP65 / 1.2m MIL STD 810H	2850g

Possibility of having a touch screen

RT15



16Go/32Go RAM DDR5, 2 x SSD M2, 15.6" Screen full HD 1920 x 1080 700 nits, TPM 2,0, High-Speed Wifi 6, Bluetooth Rev 5.1. GPS. Front camera 2 Mpixels, Fingerprint, light sensor, USB 2,0 Type-A x 1, USB 3.0 Type-A x 3, SIM Card x 1, audio jack, RJ45 Ethernet x2, HDMI x 1, SD card x 1, RS232 DB9 x 1, 5PIN Pogo Pin x1, hot-swappable battery 4850 mA 11,55V, internal battery 1300mA 11,1V, IP65, 1.2m drops.
Shipped with: battery 4850 mA 11,55V, AZERTY or QWERTY keyboard, power supply.

Processor	OS	Display	Barcode Reader	RFID Reader	Communication	IP rating / Drops	Weight
iCore5 1235U iCore7 1255U Core Ultra 7 155H Core Ultra 5 125H	Windows 11	15.6" HD 1080X1920 1000 nits	No	NXP300 (Option)	BT 5.1, Wi-Fi 6 802.11a,b,d,e,g,h,i, k,n,r,u,v,w,ac,ax 4GLTE / 5G	IP65 / 1.2m MIL STD 810H	3300g

Possibility of having a touch screen



Software tools

Depending on the product and operating system you selected, you can have access to software tools that make it easier to use, deploy, and remotely monitor the device.

Kiosk mode

This software is mainly designed to lock the system. Users limited access to device features within the scope of their software application.



RFID reader emulator

This software tool retrieves, in the active input area, the read RFID tag code. It runs as background service after launch.

Software development toolkit (SDK)

Athesi provides a software development kit which gives to developers the possibility to manage directly some features like barcode scanner, RFID reader, smart card or magnetic card reader, 3D camera for the optimization and the customization of the software.



Auto Setup

This feature allows applications to be installed and configured automatically and to be repeated on several terminals in an efficient way.

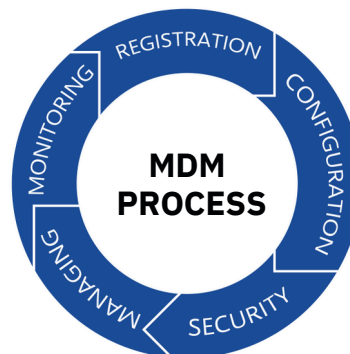
Auto Test

This integrated software tool is quite interesting for the first level of diagnostic. It allows testing one by one the hardware functionalities and to check if each function is working properly (Wi-Fi, barcodes, RFID, Display, Sensor...)



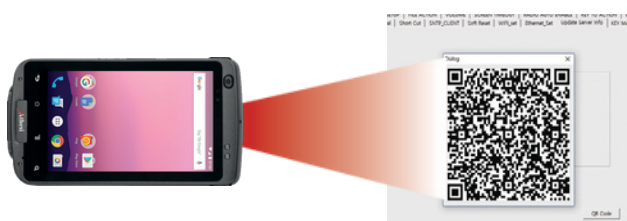
Mobile Device Management (MDM)

Athesi regularly gets its devices approved by various editors according to customer demand and requirements. MDMs are powerful and complete tools for remote administration and device monitoring. Athesi clients use different MDMs on the market such as Springdel, SOTI, Telelogos, TinyMDM, Microsoft, ...



Barcode reader emulator

This software tool retrieves, in the active input area, the read and decoded barcode. It runs as background service after launch.



Terminal Emulation software

To better and easily use Athesi devices in specific environment, it is possible to use a terminal like an emulator TNVT for example. For information, Athesi hardware is approved to work with IVANTI's Velocity emulators.



At a glance

X = Default ● = Athesi Professional ● = E Series
O = Optional ○ = R Series
- = Not available

Device	Display	Nits	Android	Windows	Removable battery	1D/2D Scanner	RFID NFC	4G/5G	GSM Voice	Fingerprint reader	ATEX	Drop (m)	IP	Weight (g)	Desktop dock	Vehicle dock
EPCE	–	–	–	11	–	–	–	O	–	–	–	–	–	1000	–	–
E40	4.0	300	11	–	X	X	–	4G	–	–	–	1.2	65	250	–	–
RT4300	4.3	450	14	–	X hot swap	X	X	4G	X	–	–	1.8	68	449	X	–
E50AT	5	500	11	–	X	–	HF (NFC)	4G	X	–	X	1.5	67	531	–	–
AP5501	5.5	450	13	–	–	–	HF (NFC)	4G	X	–	–	1.5	68&69K	234	X	X
E55	5.5	450	13	–	X	O	HF (NFC)	4G	X	X	–	1.5	68	249	–	–
E550RFID	5.5	400	13	–	X	O	BF et UHF	4G	X	–	–	1.5	65	500	X	–
AP5706	5.7	400	11	–	–	–	HF (NFC)	4G	X	X	–	1.5	68 & 69K	325	–	–
AP5705S	5.7	540	12 AER	–	–	X	HF (NFC)	4G	X	X	–	1.5	68	275	x	–
E6C	6	430	–	10	X	O	HF (NFC)	4G	–	–	–	1.2	65	380	X	–
AP6501	6.5	450	11	–	–	–	HF (NFC)	5G	X	X	–	1.5	68 & 69K	296	–	–
E65	6.5	450	14	–	X	O	HF (NFC)	5G	X	–	–	1.5	67	285	X	–
AP8001TL	8	450	10	–	–	–	X	4G	X	–	–	1.2	67	650	–	–
AP8001CL	8	450	–	10	–	–	X	4G	–	–	–	1.2	67	650	–	–
AP8003TL	8	430	15	–	X	X	HF (NFC)	5G	X	–	–	1.3	67	506	X	–
E8B	8	400	–	10	–	O	HF (NFC)	4G	–	–	–	1.2	67	710	X	X
E8E	8	550	–	11 Linux	X	O	HF (NFC)	4G	–	–	–	1.2	65	910	X	X
E8T Gen2	8	550	14	–	X	O	HF (NFC)	4G	X	–	–	1.2	67	910	X	X
EVM8	8	1000	–	11 / 10 Linux	–	–	O	4G	–	–	–	1.2	65	620	–	–
EVM8A	8	1000	12	–	–	–	HF (NFC)	4G	X	–	–	1.2	65	620	–	–
RT80	8	370	–	10	X hot swap	O	HF (NFC)	4G	–	O	–	1.5	65	910	X	X
RT80A	8	470	9	–	X hot swap	O	HF (NFC)	4G	–	O	–	1.5	65	910	X	X
AP1001TL	10.1	400	10	–	–	–	X	4G	X	–	–	1.2	65	920	–	–
AP1001CL	10.1	450	–	10	–	–	X	4G	–	–	–	1.2	65	920	–	–
AP1002TL	10.1	400	11	–	–	O	X	5G	X	–	–	1.2	65	650	X	–
AP1002CL	10.1	400	–	11	–	O	HF (NFC)	4G	–	–	–	1.2	65	650	X	–
AP1003CL	10.1	700	–	11	–	X	HF (NFC)	5G	–	X	–	1.8	67	930	X	–
E10E	10.1	1000	–	11 Linux	X	O	HF (NFC)	4G	–	–	–	1.2	65	1140	X	X
E10T Gen2	10.1	1000	14	–	X	O	HF (NFC)	5G	X	–	–	1.2	65	1020	X	X
E10T RTK	10.1	700	12	–	X	–	HF (NFC)	4G	X	–	–	1.2	65	1020	X	X
E10TAT	10.1	1000	14	–	X	–	HF (NFC)	4G	X	–	X	1.2	65	1020	X	X
E10AT	10.1	400	–	11	X	–	HF (NFC)	4G	X	–	X	1.2	65	1140	X	X
E10BC	10.1	400	–	10	X	O	HF (NFC)	4G	–	–	–	1.2	65	1210	X	X
EVM10	10.1	1000	–	11 / 10 Linux	–	–	O	4G	–	–	–	1.2	65	830	–	–
EVM10A	10.1	1000	12	–	–	–	HF (NFC)	4G	X	–	–	1.2	65	830	–	–
EPC10	10.1	220	–	11	–	–	–	4G	–	–	–	–	65	2000	–	–
EPC10A	10.1	220	12	–	–	–	–	4G	–	–	–	–	65	2000	–	–
RT110	10.1	700	–	11 / 10	X hot swap	O	HF (NFC)	4G	–	O	–	1.2	65	1140	X	X
RT120	12.2	680	–	11 / 10	X hot swap	O	HF (NFC)	4G	–	O	–	1.2	65	1955	X	X
E12T	12.2	300	10	–	X	O	HF (NFC)	4G	X	–	–	1.2	65	1480	X	X
RT140	14	1000	–	11	X hot swap	O	HF (NFC)	4G/5G	–	X	–	1.2	65	2300	X	–
RT14	14	1000	–	11	X hot swap	–	O	4G/5G	–	X	–	1.2	65	2850	X	–
RT15	15.6	1000	–	11	X hot swap	–	O	4G/5G	–	X	–	1.2	65	3300	X	–
EPC15	15.6	220	–	11	–	–	–	4G	–	–	–	–	65	2400	–	–
EPC15A	15.6	220	12	–	–	–	–	4G	–	–	–	–	65	2400	–	–
EPC21	21.5	250	–	11	–	–	–	4G	–	–	–	–	65	5050	–	–
EPC21A	21.5	250	12	–	–	–	–	4G	–	–	–	–	65	5050	–	–

Athesi

Smartphones & Tablets

A french brand

31 rue des Clotais
94360 Bry-sur-Marne
France

+33 1 83 64 57 40

info@athesi.com

www.athesi.com

 Athesi



Distributed by :