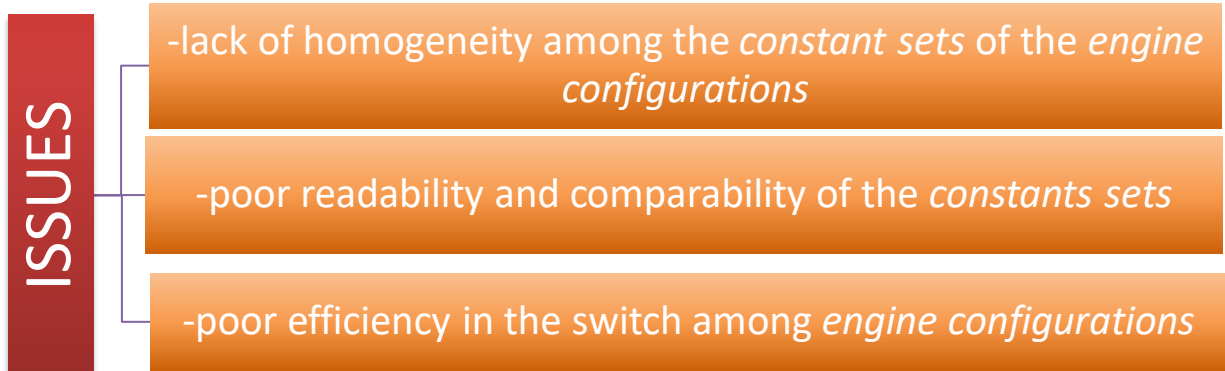


# Constants Managing

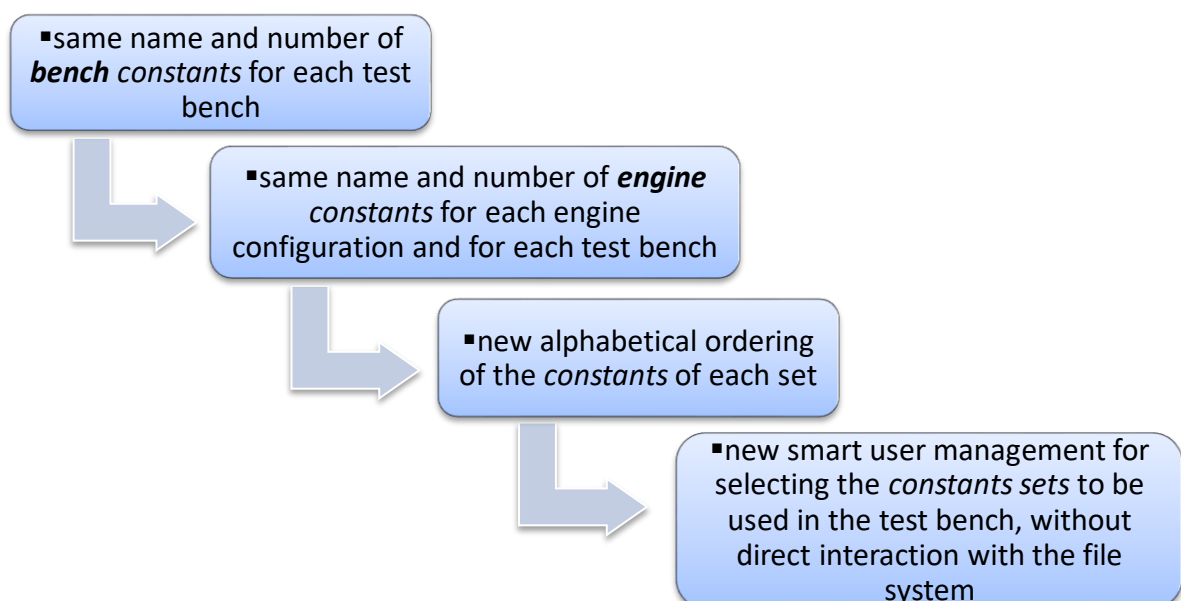


## SOLUTIONS

➤ Standardization of name, number and ordering of the *constants*

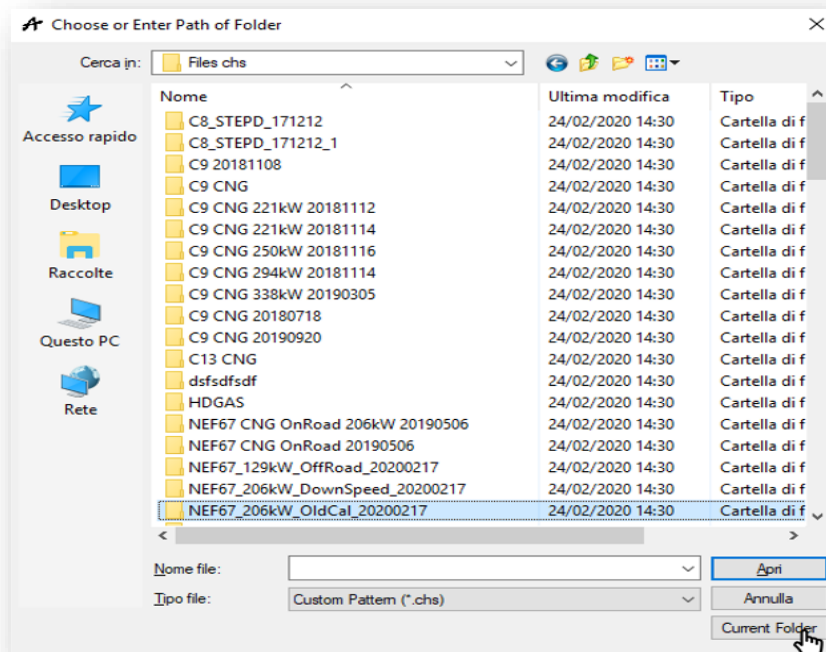
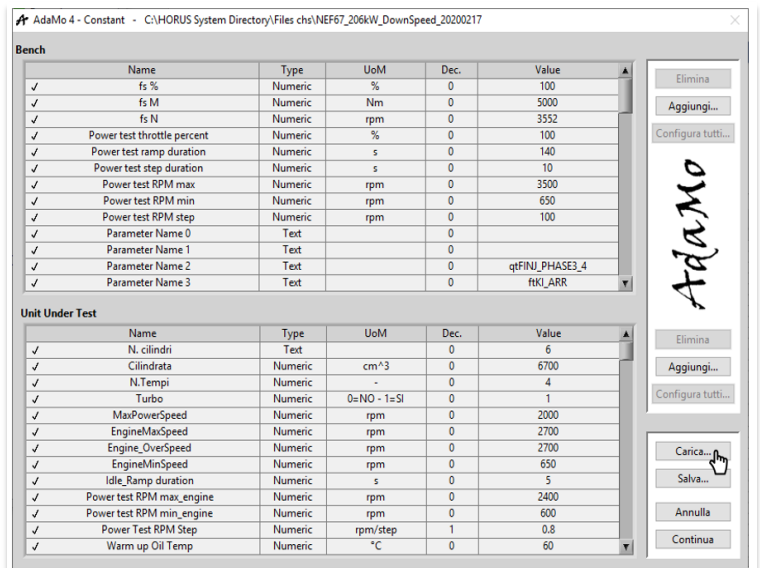
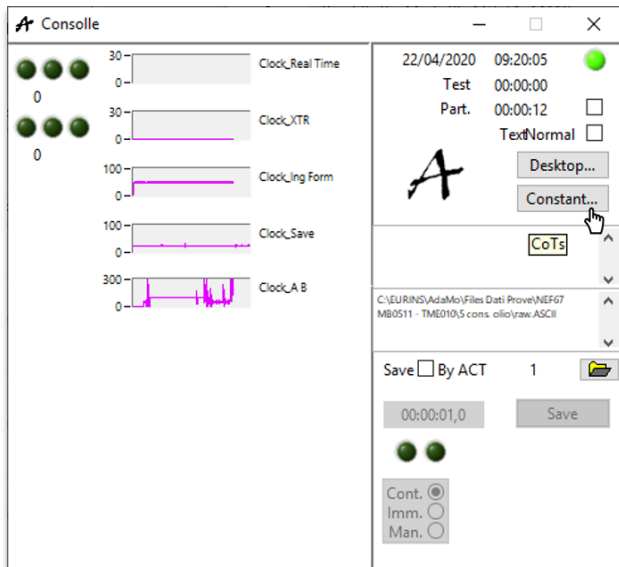
➤ Smart user management for selecting the *constants sets* to be used in the test bench, without direct interaction with the file system

## Standardization of existing constants sets



## AS IS

Select the specific folder containing the constants set to be used

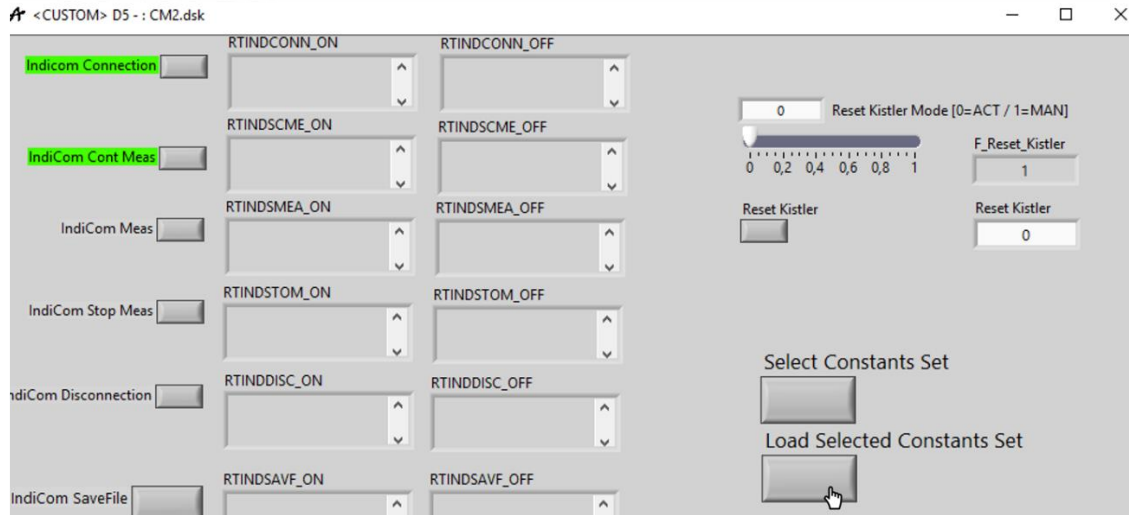


## TO BE

### Direct engine selection from Desktop 5 <CUSTOM>




Once selected, press the "Load Selected Constants Set" button



## BENEFITS

-elimination of automation errors caused by the lack of homogeneity among the *constants sets*

-greater readability of the values of the *constants*

-greater agility in the switch between engine *configurations*