

UPTOWN MUSE LANDSCAPE STUDIO
presents

LIFE DROP

How to save water and convert unsuitable lands into oases.

FEBRUARY 2022
© UMLS Rome - Turin - Amsterdam



01 – PROBLEM

UNAVAILABILITY OF DRINKING WATER

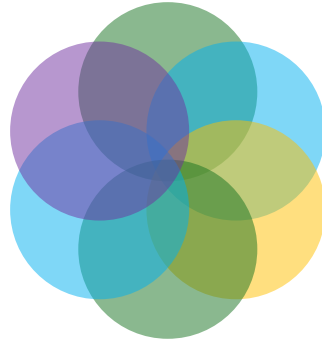
On Earth, 97.5% of the water is salty and contained in the oceans. Only 2.5% is fresh water ,
On this amount of water:

68.7% are found
in glaciers;

30.1% in
groundwater;

0.8% in
permafrost;

0.4% on the
surface and in
the atmosphere.



Eventually, less than 1% of the water on Earth is fresh and liquid.

PURE WATER LOSS CAUSES



POLLUTION

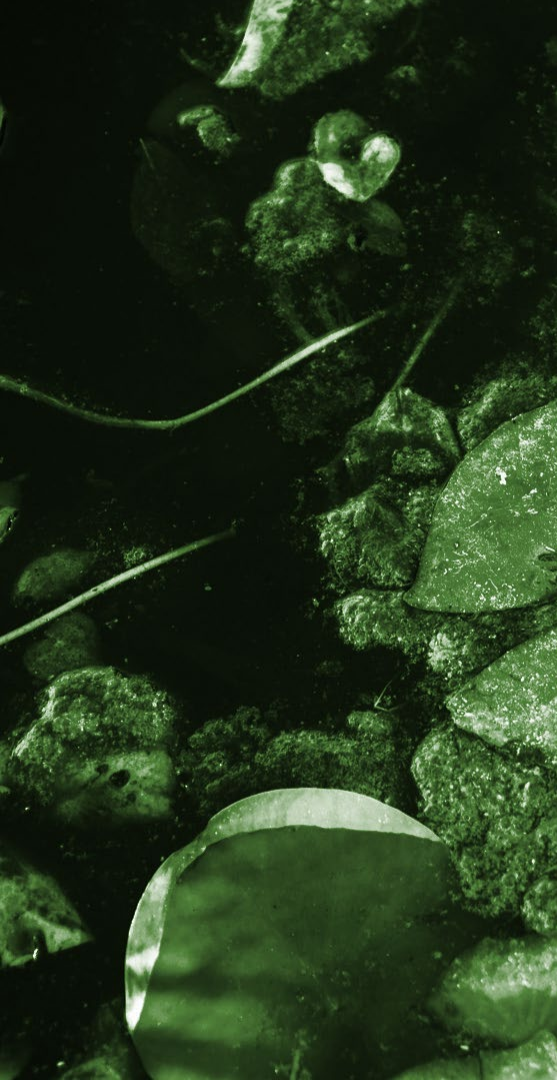


DRAINAGE



LAND REUSE

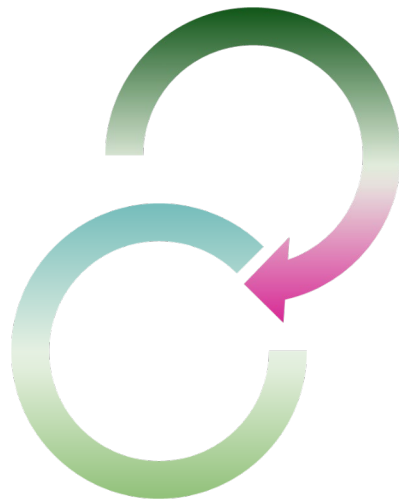




02 – SOLUTION

FROM PLANT TO PLANT

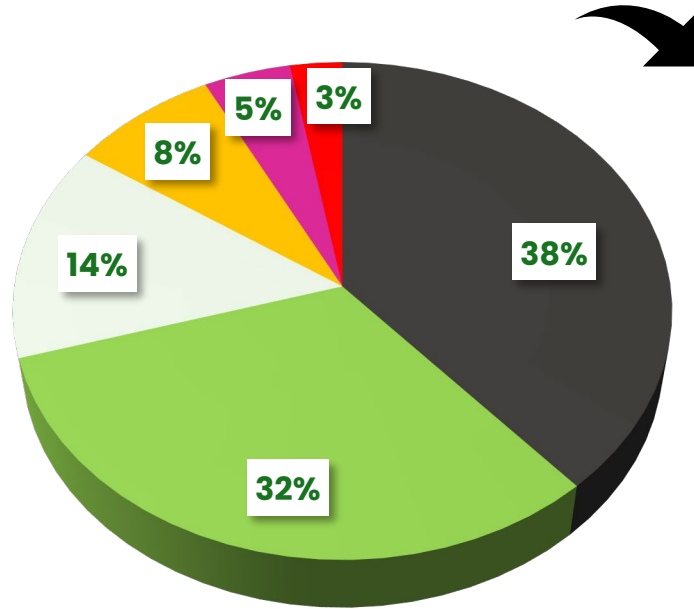
We collect rainwater and/or waste water (polluted), then we use water plants to purify it naturally, then this water can give oxygen and minerals to new plants, within an hydrocultural system.



Our main energy source to feed the system (hydraulics, organic waste recycle, sensors connected to the IoT), is an hybrid system between traditional renewable sources and plants too.

HOW THE «LIFE DROP» RUNS?

- Phytodepuration
- Hydroculture
- Organic Waste Recycle
- Clean Energy Power
- IoT
- Chemical Monitoring



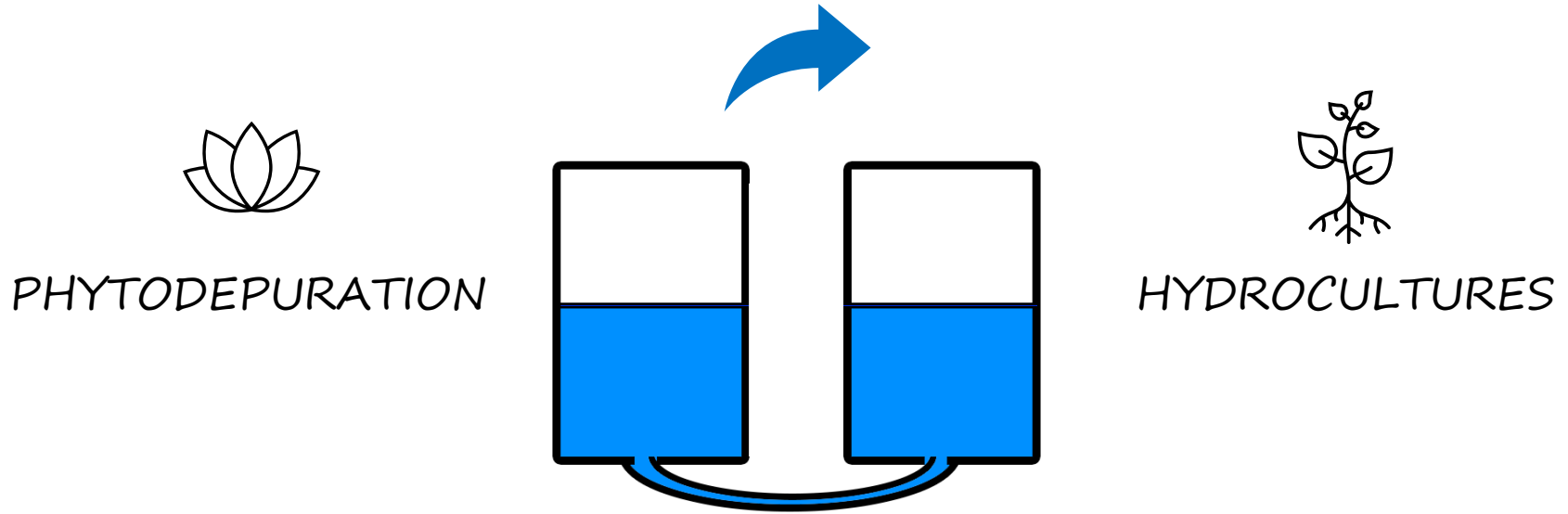
CALL TO ACTION

GIVE A NEW LIFECYCLE TO WASTED WATER!

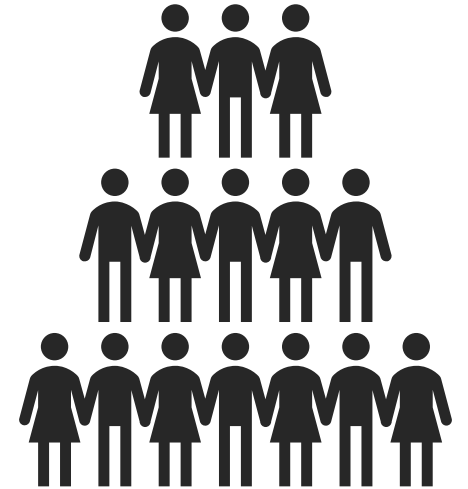
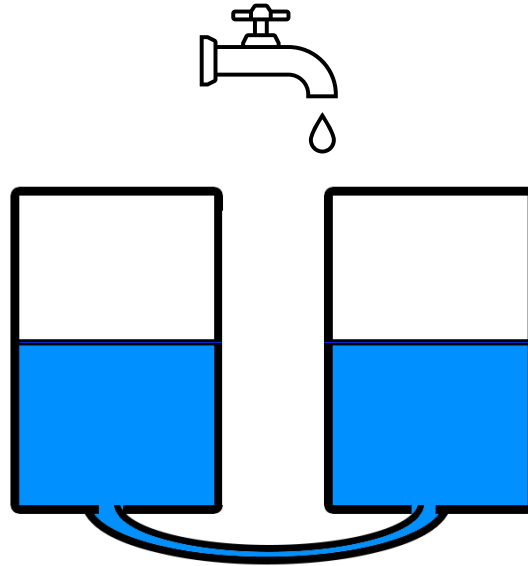
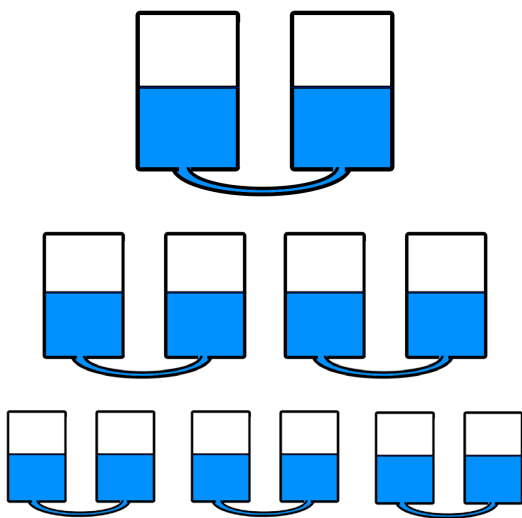


Photo credit © Digital Art/Corbis

A NEW LIFECYCLE TO WATER



MODULARITY AND SCALABILITY



COMPARING LIFE DROP TO STANDARD WATER-BASED GREEN SYSTEMS:



61%

SAVED WATER

Unavailable/wasted water is harvested and purified by plants.



97,4%

SAVED SOIL CONSUMPTION

Hydroculture basically requires expanded clay and a piping system for fertigation.



18%

REFORESTATION

Trees for water. Unlike others anthropic productive activities, Life Drop requires trees planting, causing humidity levels in the air to rise, which will bring rain.



Uptown Muse

WHERE? LIMITLESS APPLICATION

1

SEA & OCEANS

The «Life Drops» can run on board through piping (boats/any floating item) thanks to desalination.

2

DESERTS

The «Life Drops» can run open air, thanks to hydro-genetic system, palms and solar power.

3

CITIES

Reconverting Industrial, Urban and Peri-urban contaminated waters to new life.

CONSEQUENCES



FOR HUMANS

- Today 2,2 MLD people have no safe access to potable water.
- «Life Drop» purifies unavailable precious water (fresh/salty),
- saving it to grow plants and food with very limited soil consumption.



FOR THE PLANET

- «Life Drop» gives to wasted water a new lifecycle, through natural processes.
- The global footprint tends to zero.
- Limitless application, in extreme contexts (deserts, boats).





**WE ARE PROTOTYPING
A MINIMAL
“LIFE DROP” UNIT**

FEBRUARY 2022



Garden shell

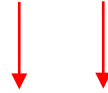
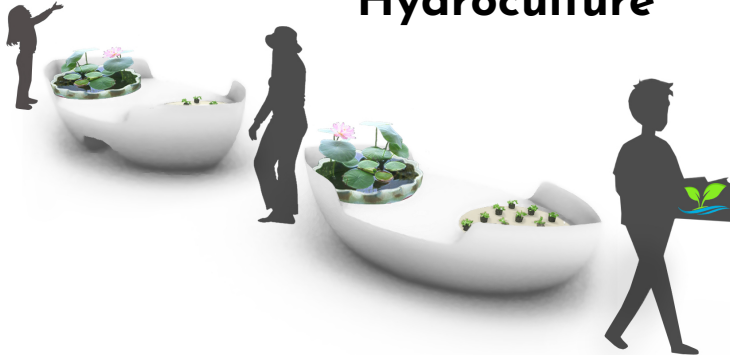
2022 © UPTOWN MUSE LANDSCAPE STUDIO

Garden shell®

Phytodepuration

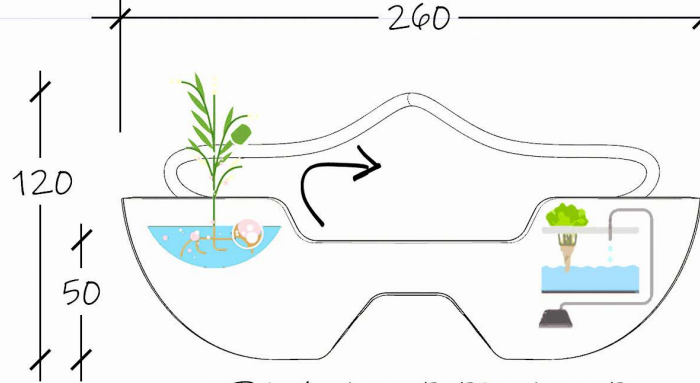
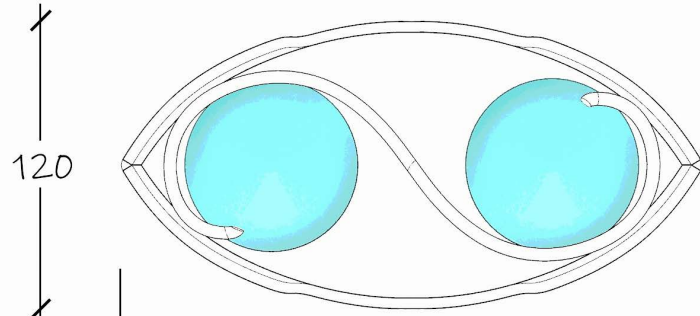


Hydroculture



Uptown Muse Studio Copyright 2022

Purified water goes into Hydroponics



FROM PLANT TO PLANT
Phytodegradation is supporting agriculture

A self-powered (iconic) garden boat. Even floating?

The only electricity we need,
is powered by the plants,
with a registered
technology. The system
needs an IoT sensors
system, and hydraulics, all
powered by the plants.

The plants

Nymphaea 'shady lady'

Iris pseudacorus

Sagittaria platyphylla

Elodea canadensis



Hydrophytes
(Nimphaes)

+

Bulbous and
rhizomatous

+

Aromatic herbs

+

Seasonal
Vegetables





**coming soon
at Festival del Verde e del Paesaggio
Rome, Auditorium Parco della Musica
May 13-14-15th 2022**

Our latest project

Roof Garden

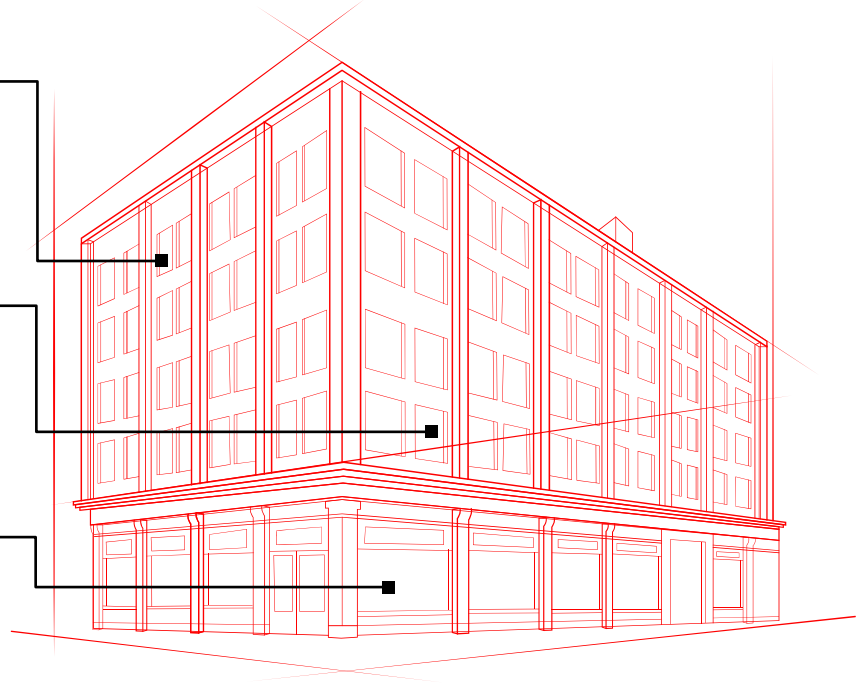
Vertical hydroponics fertilized by organic waste, powered by hybrid **electric-green** generation system.

Patented Films

Photosynthetic films **growth accelerators** are put on stained glass windows.

Uptown Mall

Full open windows for new sustainable lifestyles, shared spaces for social needs.



The Muses

Nabila Di Pilla



Rome. Designer, Landscape Architect, Writer. Co-founder at Uptown Muse Studio.

Monica Rampanti



Turin. Architect, Bio-architecture and Feng Shui Specialist. Co-founder at Uptown Muse Studio.

Salvatore Gerardi



Rome. Mechanical Engineer, Data Intelligence and Decision-making strategist, Startupper.

The Muses

Semi Arfaoui



Florence. Surveyor.
Landscape Architect.
Senior Designer at
Uptown Muse Studio.

Cecilia Cocci



Rome. Environmental
Education Professional
Trainer. Landscape and
Environment Planner.

Yifei Wu



Rome. Designer.
Landscape Architect.
Senior Architect at
Uptown Muse Studio.

The Muses

Giovanni Ferrarese



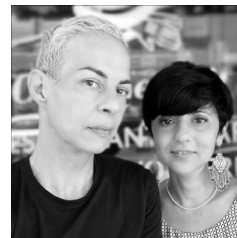
Amsterdam. Agronomist and Landscape Architect. Art Director at Uptown Muse Studio.

Alessia Scarpati



Rome. Architect and Lanscaper. Communication Manager at Uptown Muse Studio.

Filippo Biagetti



Milan. Artist & Designer. Networker at Uptown Muse Studio.

THANKS!

Do you have any questions?

uptownmuse.studio@gmail.com

+39 339 712 5563

www.uptownmuse.cloud

