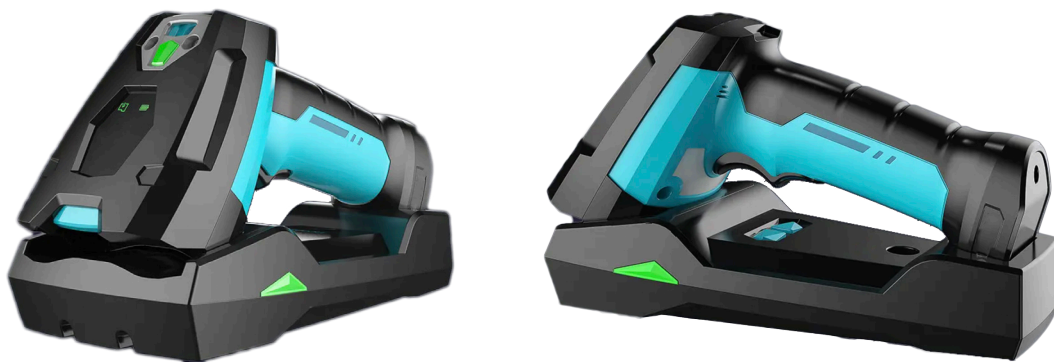


- Ultra-long working depth of field, the scanning distance of large-size barcodes can reach more than ten meters
- Bluetooth and 2.4G dual-mode communication;
- IP68 waterproof and dustproof.
- Good ergonomic design for long-time working
- Built-in data memory, which can store up to 50,000 bar codes
- Good at scanning scratched bar codes, highly reflective bar codes, high-density barcodes, miniature barcodes and other difficult barcodes
- It can scan efficiently both in poor-light warehouses and outdoors in direct sunlight. It can also capture codes on a shelf or truck over 10 meters away.
- Support group working of multi-clusters, one socket can support up to 100 handsets
- It can be desktop or by wall mounted



The actual appearance is subject to the final configuration.

## Specifications

<b>MODEL</b>	SB100BER	
<b>Power and Battery</b>	Voltage	DC 5V ± 0.25V
	Power	460mA
	Battery	2600mA (standard) - 3300mA (Optional)
	Endurance	On condition scanning every 2mins: 2600mA, can work up to 19hrs 3300mA can work up to 24hrs
<b>Performance Ability</b>	Lighting & Aiming	Red Lighting, Red laser aiming;
	Resolution	Megapixels
	Scan Angle	± 72°, ± 72°, 360°(Skew,Pitch,Roll)
	Contrast	≥25%
	Code Res.:	≥4mil
	Scan Ability	Printed, Sprayed, DPM, On-screen
	Code Types	2D: QR Code, Micro QR, Data Matrix, PDF417, Micro PDF417, Aztec, Maxicode 1D: UPC-A, UPC-E, EAN-13, EAN-8, ISBN/ISSN, Code 39, Code 39(Full ASCII), Code 32, Interleave 2 of 5, Industrial 2 of 5, Matrix 2 of 5, IATA 25, Codebar, Code 128, Code 93, Code11 cMSI/Plessey, UK/Plessey, UCC/EAN 128, Composite Code -A/B/C, GS1 DataBar(RSS), etc.

<b>Communication Method</b>	Wireless	Bluetooth and 2.4G dual-mode
	Contact Radius	Bluetooth 30m, 2.4G 100m;
	Group Work	A socket can support up to 100 handsets at the same time
	Interface	USB-HID; SPP; BLE
	Trigger Mode	Manual, Consecutive Scanning, Auto-sensing
	Cable Length	Standard: 2 meters USB cable
	Alert Mode	Buzzer (volume and tone adjustable), LED light, vibrator
<b>Material &amp; Environment</b>	Operating Temperature	-30°C ~ 55°C
	Storage Temperature	-40°C ~ 70°C
	Relative Humidity	5% ~ 95% (Non-condensing)
	Dust & Water Proof	Scanner: IP68; Socket: IP52
	Shock Proof	Withstand multiple drops from 1.5 meters to concrete surface
	Setting Method	Scan setting barcodes / press button on socket
	Shield Materials	Bi-color: ABS+PC/TPU; Single: ABS; Transparent: PC ; Waterproof ring: Silica gel
Scan Window	Scratch-resistant toughened glass	
<b>Regulation</b>	EMC	CE, FCC-ID, ROHS

## Packing List

Default Items	Qty
SB100BER Unit	1

## Options for Default items

Optional Items	Max Qty	Description
RS232 cable	1	
Power adapter	1	
P/S2 cable	1	
5 meters USB cable	1	