



F O R C O N T E M P O R A R Y
R E I N A S S A N C E ©

2 0 2 6

**C
O
N
T
E
N
T
S**

MANIFESTO 03

IL COLLETTIVO 05

PROJECTS 10

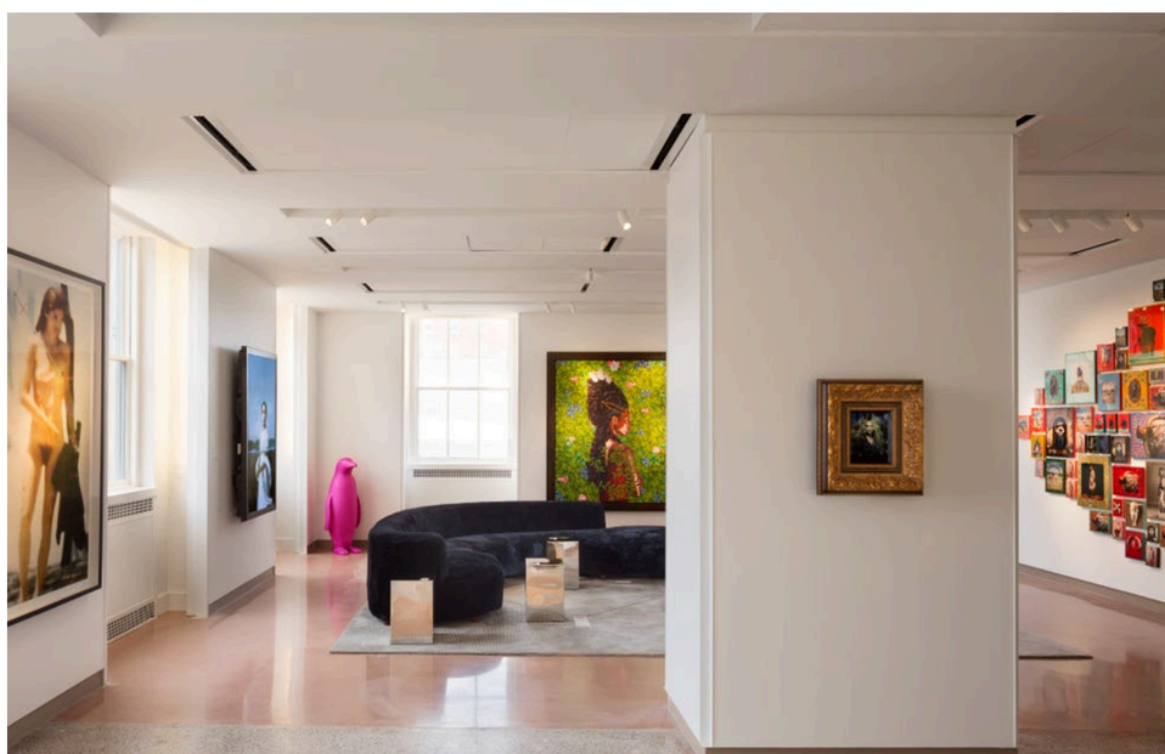
Le Palette is collective of artists, writers, curators, designers aiming to inspire a **cultural, artistic and scientific Contemporary Renaissance**. Le Palette was born in Shanghai in 2016 and actively operates in Europe.

LE PALETTE aims to open dialogues through arts enhancing cultural heritage and building contemporary corporate art collections' as long term assets and mediums to craft new lasting meanings.

How Corporate Art Works

A **corporate art collection** is an assemblage of art works, acquired and displayed by a company. They serve as **mission's statement and cultural deposition** about the corporate value and brand's identity. They constitute a whole narrative supporting a multilevel communication towards internal and external stakeholders.

ART X HOSPITALITY



L E P A L E T T E S E L E C T I O N


LEPALETTE
MILANO/SHANGHAI

ART X HOSPITALITY



A L E S S A N D R O D I G A E T A N O X
B U L G A R I H O T E L


LEPALETTE
MILANO / SHANGHAI

LE PALETTE born from the idea that **a contemporary Renaissance is possible** our mission is to support **companies as patrons for art** guiding its assets selections, artistic projects and long term narratives

HOW WE DO IT

- //ESG strategies through Art
- //Corporate Social Value
- //Career Coaching and Corporate Trainings
- //Curatorship
- //Clienteling & Experience
- //Installations
- //Cultural projects
- //Artist Collaborations
- //Crossovers
- //Artist Residency program

The nicest thing about contemporary artists is that they are still alive. Take the chance to meet them and create with them the contemporary culture.

Le Palette is a living organism made by real people for the people. Here some of the artists who joined Le Palette in 2024/2025:

Giuseppe Palmisano
Valentina Millosevich
Sabrina Cirronis
Awuku Darko
Ekaterina Ignatova

Fosco Grisendi
Benedetta Segala
Viktoria Kurnichi
Andrea Polichetti
Luca Font
Seungwoo Park
Alessandro Digaetano
Dario Picariello
Domenico Ludovico
Giuseppe Gradella
Ahmed Farid

INSIDE: IL COLLETTIVO



VIKTORIA KURNICHI, IMMER NUR
EINE ANNÄHERUNG // ALWAYS ONLY
AN APPROXIMATION 2020

The nicest thing about contemporary artists is that they are still alive. Take the chance to collaborate shaping today while imagining tomorrow.

Le Palette as the auction paddles for Italians: because art is an asset and every artwork adds enduring value to the corporate legacy. As a renaissance patron's of art building a collection will nourish a true narrative, while consistently meeting CSR goals positively impacting places and communities.

ART IS THE RIGHT THING

//Corporate Collection
//Consistent Narrative
//Inside-Out Communication
//Financial and Social Asset
//Patronage & Reputation
//Enduring Legacy
//Universal Language



LUCA FONT X KIKO

CORSO GARIBALDI, MILANO



LUCA FONT X KIKO

THE BEAUTY WITHIN



BEATRICE BENICCHI
NON PER CATTIVERIA

Gramma  Feltrinelli

GIUSEPPE PALMISANO
GRAMMA FELTRINELLI


LEPALETTE
MILANO/SHANGHAI

**XIII ED
IL MONDO**

**31 OCTOBER
03 NOVEMBER
2024**

ILO Turin
Viale Maestri
del Lavoro, 10

**The
Others**



TORINO ART WEEK
OUT OF SERVICE



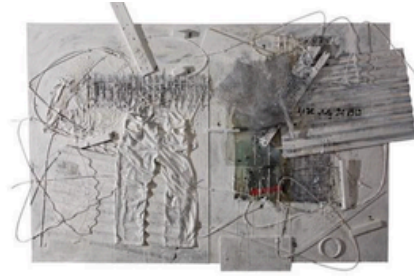
S U M A S X M U D E C
T H E R I T E O F P A S S A G E



COLLECTORS



OPERA ADOTTATA, BENEDETTA
SEGALA, NINFEE



Suhaimi Fadzir, Life, July 24, 1939

Aliya and Farouk Khan on the Malaysian contemporary art scene



LUX: How do you mentor and show artists in the specialist subsectors?

AFK: One of the most effective ways is through our method of collecting and documenting.



Zulkifli Yusoff, Hujan Lembing Di Pasir Salak

LUX: How can you codify a canon of work?

AFK: Codifying a canon of work requires diligence and a critical mind. We engaged in a great deal of research and academic input via

COLLECTORS



VELOURS , BENEDETTA SEGALA ,
STUDIO BIGNAZZI E PACCIANI

CORPORATE ART



L U C A F O N T X E A T A L Y M I L A N O

C O N T A C T @ L E P A L E T T E . I T
G R A Z I A N A @ L E P A L E T T E . I T
L E P A L E T T E . I T

